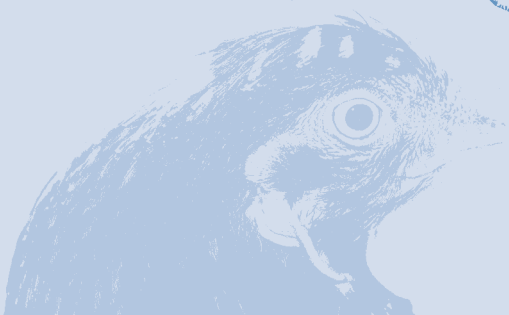


RSPCA 

annual report

2007





What your donation can do for animals

\$20 feeds and cares for a dog for one day

\$15 provides shelter for an animal for one day

\$160 to \$280 desexes an animal

\$300 keeps an RSPCA inspector on the road

\$2000 repairs a dog's broken leg

\$40,000 pays the legal costs for one day to prosecute a cruelty offender

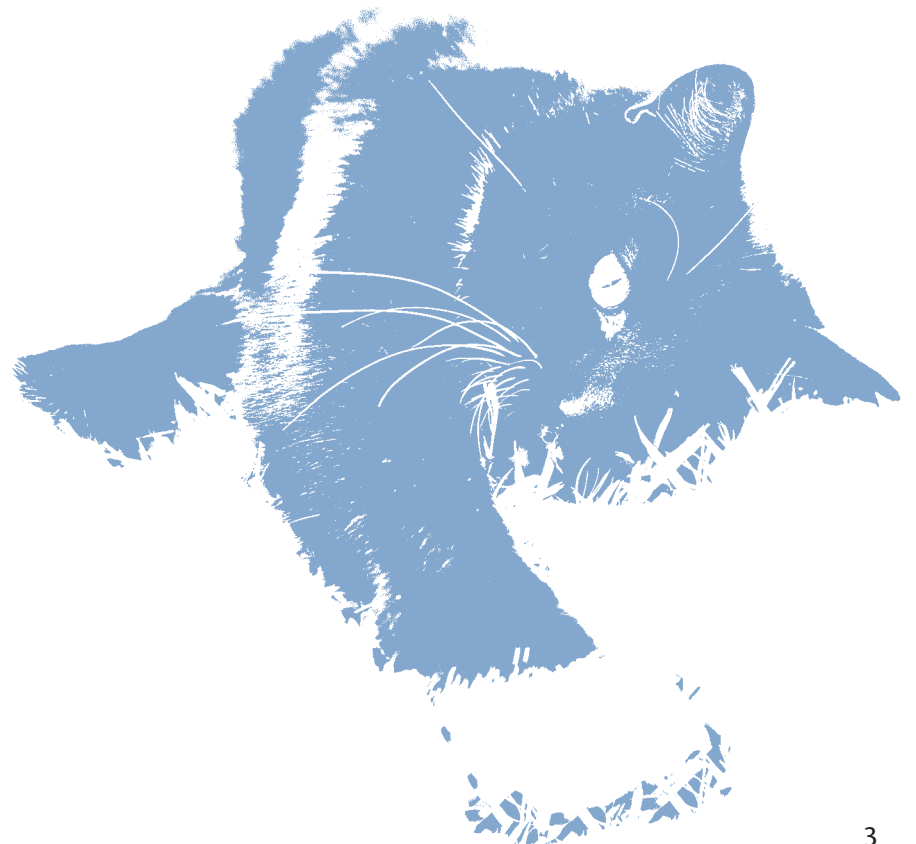
\$20,000 would provide monitoring equipment for all four RSPCA veterinary clinics

To donate to the RSPCA phone 1300 RSPCA1
(1300 777 221)



annual report | 07

4	President's report
5	Minister's message
6	RSPCA Patrons
7	Chief Executive Officer's report
8	Inspectors
14	Veterinary clinics
16	Training
17	Financial statements
49	Bequests
51	Marketing
53	Million Paws Walk
56	Education
58	Shelters





president's report | 07

Weather has been a major factor for the RSPCA this year. Not only has much of the State felt the affects of the worst drought in over a decade but communities also had to contend with torrential rains and flooding.

RSPCA NSW has been vigilant in assisting farmers and rural communities in providing stock advice and drought relief. We have also actively lobbied the Government to ensure drought relief plans include animal welfare initiatives.

Our inspectors, vets, shelters, branches and volunteers must also be commended for the supreme efforts they put into responding to emergency calls from the Hunter and Central Coast regions during the flooding in June of this year. RSPCA staff and supporters went above and beyond to ensure that the hundreds of injured and displaced animals were given medical treatment and housing in alternative accommodation.

March saw the much anticipated opening of stage one of the Yagoona shelter rebuild, by Premier Morris Iemma. The development includes 105 new state-of-the-art kennels, stable facilities, poultry and flight aviaries and a new cattery. Due to the increased cost of services, we have been unable to maintain our building schedule at the same pace. We are planning staged work for both Yagoona and Illawarra shelters in the future.

Our highly-respected community initiatives have also been highlighted this year. The humane education team was kept busy travelling to hundreds of schools across the State. Their interactive lessons help children understand the importance of treating all creatures great and small with kindness and care. This work is not only important for a child's ethical development but it also generates RSPCA advocacy at an early age. There are plans to expand this program into high schools.

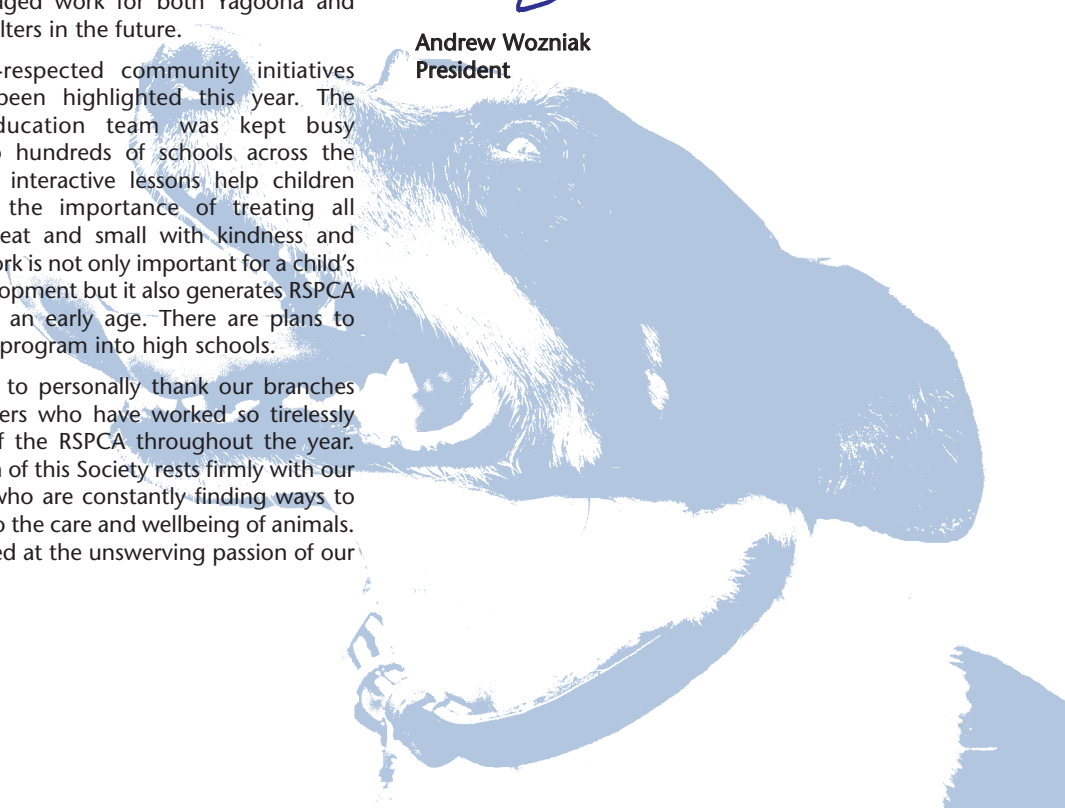
I would like to personally thank our branches and volunteers who have worked so tirelessly on behalf of the RSPCA throughout the year. The strength of this Society rests firmly with our supporters who are constantly finding ways to contribute to the care and wellbeing of animals. I am humbled at the unswerving passion of our

supporters. We are very lucky to have a support team that is active, motivated and focussed.

Our inspectors and vets work tirelessly to ensure animals that need our care and protection get it. This year, their hard work has been recognised in the wildly successful television show, RSPCA Animal Rescue. RSPCA NSW was actively involved in this *Imagination TV* production with a crew following our inspectors and vets. This series provides a snapshot of the diverse work of our inspectors. It has generated awareness of and support for the RSPCA. Negotiations are underway for a second series and we hope it will continue to build on the success of the first.

What a year it has been. Natural disasters, the completion of major building projects, successful community engagement programs and a TV show. It's an exciting time for the RSPCA. On behalf of my fellow directors, I would personally like to thank our staff and supporters for their efforts throughout this year. Our progress in the last year has been phenomenal. I personally can't wait to see what we have in store for the coming year.

Andrew Wozniak
President





**MINISTER FOR NATURAL RESOURCES
MINISTER FOR PRIMARY INDUSTRIES
MINISTER FOR MINERAL RESOURCES**



This year, the RSPCA has had some major successes in its tireless fight against animal cruelty.

Prosecutions increased and four people were imprisoned for serious acts of cruelty against animals. This year also demonstrated that the courts are now more inclined to issue prohibition orders against those people who really should not have animals in their care.

Public awareness of animal cruelty issues was heightened with the airing of the highly successful RSPCA Animal Rescue Series and the RSPCA was able to reinforce the message of this program with the recruitment of six new inspectors who will significantly increase their skills base in the field.

It was also positive to see a strengthening of the law on tail docking introduced, closing the loopholes for tail dockers.

The RSPCA's inspectors have a difficult job at the best of times and the lemma Government was pleased to be able to contribute to making their jobs easier. We assisted the RSPCA to relocate their offices including the inspectorate from Yagoona to brand new professional premises at Sydney Olympic Park, delivering the organisation greater workplace efficiency. The move means inspectors are now able to spend time uninterrupted on preparing cases for prosecution.

The RSPCA also provided the animals in its care with better facilities this year, with the completion of stage one of a shelter upgrade at Yagoona and the first stage of a new \$11.5 million shelter in the Illawarra.

This has already had an impact on the number of animals finding homes and the good news is that adoption rates have increased over the past financial year.

The RSPCA continues to initiate new strategies and programs to increase re-homing and decrease euthanasia and to raise its public profile to reach an ever-increasing number of people with its message of kindness to animals and prevention of cruelty.



Ian Macdonald MLC

PATRONS

The Hon Morris Iemma MP
Premier of New South Wales

The Hon Barry O'Farrell MP

The Hon David Brownhill



Premier of New South Wales



**A MESSAGE FROM PREMIER MORRIS IEMMA
RSPCA ANNUAL REPORT**

As always, it's an honour for me to contribute to the RSPCA Annual Report and to praise the wonderful staff and volunteers who have spent the past year making a difference for our friends in the animal kingdom.

As always, it is a mixed bag - on the one hand, great strides forward in law enforcement and new facilities; on the other hand, continuing levels of neglect and cruelty that are unbelievable in a civilised community.

On the positive side, the number of adoptions and pets reunited with their owners has risen, while the number of pets euthanased has fallen.

Also on the positive side, stage one of the new shelters at Yagoona and the Illawarra have been completed, and the NSW Government has been a proud contributor to both these outstanding projects.

But, as I said, a large number of careless and cruel people still regrettably think that it is acceptable to injure, neglect and dump animals, and it is thus good to see such morons being brought before the courts and punished.

In an ideal world, we wouldn't need an RSPCA because everyone would treat their animals with care and responsibility. But given the unfortunate side of human nature that impels some people to mistreat animals, thank goodness we have such a professional and vigilant organisation to rely on.

The RSPCA's inspiring and tireless work has my deep respect, and I congratulate all its staff, volunteers and supporters for another year of excellence and achievement.



Morris Iemma MP
Premier



ceo's message | 07



This year, an emphasis on getting the basics right has seen remarkable improvements to RSPCA NSW's re-homing and euthanasia statistics.

We have achieved a 50 percent reduction in dog euthanasia due in part to the fact that we have increased regional transfers. In 2006 to 2007, we used our animal ambulances to transfer 597 animals from regional shelters to Yagoona, where they had a higher chance of being adopted. We also increased our transfer rates from council pounds, giving more animals a better chance of a new life.

To support these increased numbers, our behavioural assessment team improved practices to ensure that only safe and appropriate animals were available for adoption. In doing so, our return rate on adopted animals plummeted. From 20 percent return rates in previous years, this year's return rate dropped to 3 percent - a wonderful result and a credit to the assessment team and its improved processes.

Microchipping and desexing programs, which are widely supported by our branch network, also returned pleasing results this year. We desexed 10,000 animals in 2006-07. 1200 of these animals were through Community Animal Welfare Scheme (CAWS), which sends vets, inspectors and educators to remote and regional communities.

Compulsory microchipping has resulted in 7598 dogs being returned to relieved owners in the last year. This is a significant increase on previous years. There is nothing as satisfying as seeing a reunion between an owner and pet - all thanks to a small piece of technology. We hope to increase these return rates in subsequent years.

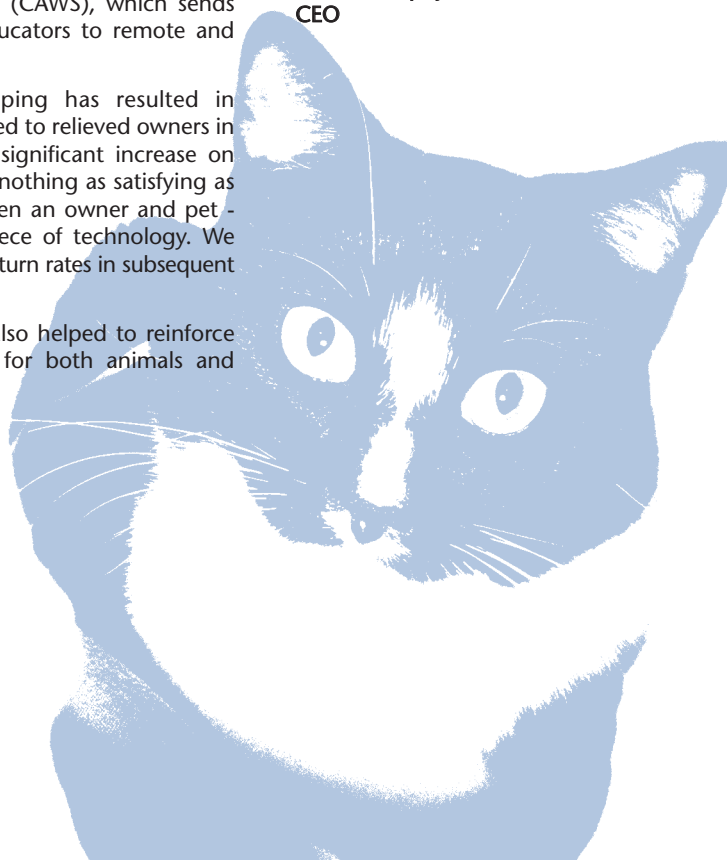
Community programs also helped to reinforce that the RSPCA works for both animals and

people. Programs such as CAWS, Pets of Older People (POOPS), Safe Beds for Pets and our wonderful humane education program actively provide services and support to the wider community. In assisting people in need and educating this State's young people on the importance of treating all creatures - people and animals - humanely, we are providing valuable people-based services that echo our five freedoms.

Full credit must go to our staff, branches and volunteers for supporting our internal and external initiatives this year. We cared for 42,148 animals in 2006-2007. A record number that stretched our resources to the limit and yet, we re-homed more animals and euthanased fewer - very pleasing results.

It is gratifying to see results reinforcing that we are on the right track. With better practices in place and more education and support in the community, RSPCA NSW can only go from strength to strength.

Bernie Murphy
CEO



Our Mission

Our goal is to improve the welfare of animals. This is achieved by our enforcement of the Prevention of Cruelty to Animals Act, the Prevention of Cruelty to Animals (General) Regulation and associated Model Codes of Practice which may involve the prosecution of offenders, issuing of penalty notices and written notices of care. The inspectors further improve the welfare of animals by participating in education programs, contributing to various animal welfare committees, rescuing injured or trapped animals and assisting with management of animals in natural disasters.

Highlights

The filming of *RSPCA Animal Rescue* which has been extremely successful in raising awareness of the RSPCA, the inspectors and the kinds of jobs we attend every day. The first series was extremely successful and filming for a second series has already begun.

The recruitment of six new inspectors - three metropolitan and three regional over the past twelve months who bring considerable knowledge and experience to the organisation. We have recruited staff with law enforcement experience, companion animal management experience, veterinary nursing, native animal and reptile husbandry experience, farm management consultancy and graduates in agricultural science and animal and bio-veterinary science.

An amendment to the tail docking provisions in the Prevention of Cruelty to Animals Act to state that to dock the tail of an animal means to remove all or part of the tail whether by surgical or other means. This confirms that it is illegal to dock an animal's tail by banding.

Staff

During the year the inspectorate was resourced with a total of 31 inspectors, including the chief inspector, deputy chief inspector, three team leaders and 29 inspectors. The inspectors are also significantly supported by two administrative assistants in the Sydney office as well as six honorary branch inspectors distributed throughout the State.

Performance

In the past year we received a total of 11,812 complaints, which is an increase of just over 500 complaints on the previous reporting period. Of these complaints approximately 53% were investigated by the metropolitan inspectors and 47% by the regional inspectors. Throughout the year we also referred a small percentage of complaints to the NSW Police for investigation, these complaints were those in which an animal required urgent assistance and there was no RSPCA inspector in close proximity. In most of these cases follow-ups or revisits were completed by the RSPCA.

The number of prosecutions commenced has increased in the last twelve months with proceedings against 140 people with 740 charges being laid for animal cruelty offences. Of the charges laid, 265 charges were for owners who failed to provide animals under their care with veterinary treatment, 195 charges for people who failed to provide their animals with proper and sufficient food, 128 charges of committing an act of aggravated cruelty, 39 charges of failing to exercise reasonable care control or supervision of animals which resulted in the commission of an act of cruelty and 20 charges of not providing proper and sufficient water to animals. The remaining charges related to the provision of exercise for animals, tethering animals with an unreasonably heavy chain, possessing electric dog collars, docking the tails

of pups, abandoning animals and setting steel jaw traps.

Significant cases

Robert James Whiley (27) of Sandy Beach near Coffs Harbour was charged with one count of committing an act of aggravated cruelty upon a dog and failing to exercise reasonable care of his dog to prevent the commission of an act of cruelty. Whiley tethered his dog with a chain that was attached to a steel pin in his rear yard in early December 2005. Although he dog was tethered with access to water and shelter it was tied in a way which allowed it to become extremely tangled to the point where it resulted in the asphyxiation of the dog. Robert Whiley entered a plea of guilty to the aggravated cruelty charge at Coffs Harbour Local Court on 23 August 2006. He was fined \$2000 and ordered to pay \$67 in court costs. He was further ordered to pay \$273.50 in veterinary expenses and a contribution of \$5000 towards legal expenses.

Judith Loveday (62) of Annandale was charged with eight counts of failing to provide veterinary treatment to kittens and eight charges of committing an act of aggravated cruelty. In March 2006 the RSPCA attended Loveday's property and located a number of kittens who were displaying signs of advanced cat flu. The kittens were seized by the RSPCA and presented to a veterinarian who was of the opinion that the kittens were in such a physical condition it was cruel for them to be kept alive, they were humanely euthanased. On 30 October 2006, the matter was dealt with in Downing Centre Local Court, where in her absence, Loveday was convicted and fined \$100 on each veterinary treatment charge and \$200 on each aggravated cruelty charge. She was also placed on a prohibition order which prohibited her from owning any more than two dogs. Loveday lodged an application to have her conviction annulled because it was dealt with in her absence. The matter was reheard at the Downing Centre Local Court on the 12 February 2007 where the aggravated cruelty charges were dealt with under section 32 of the Mental Health (Criminal Procedure) Act. In relation to the veterinary treatment charges, she was placed on a two year good behaviour bond. The magistrate also banned Loveday from owning any more than three desexed cats and two dogs for a period of ten years.

Ray Elston and **Jeanette Fairchild** of Brodies Plains were each charged with four counts of failing to provide veterinary treatment to dogs in their care. Both Fairchild and Elston have been prosecuted by the RSPCA before. In this matter, both pleaded not guilty before Inverell Local Court on 20 October 2005. They were each convicted and placed on a two years and three months' good behaviour bond with the following conditions:

That they not own more than ten dogs each, that all dogs be microchipped and microchip details be forwarded to the RSPCA and that quarterly veterinary reports on the condition of each dog be forwarded to the RSPCA.

Elston and Fairchild must also allow the RSPCA and an accompanying vet reasonable access to their dogs and must not replace any dogs without the written permission of the RSPCA.

The pair were fined \$350, \$300 and \$300 for each remaining count of failing to provide veterinary treatment.

Both Elston and Fairchild lodged appeals against the severity of their sentence, determined in Inverell District Court on 31

October 2006. The sentence was upheld with the exception that the conditions had to be met by 20 January 2007.

A loss by the RSPCA in a tail docking case led to a tightening of tail docking legislation. A Hornsby man, who was charged with five counts of docking the tails of boxer pups using rubber bands, escaped conviction when his case was dismissed. The magistrate argued there was no definition of tail docking in the Prevention of Cruelty to Animals Act and that the dictionary definition related to cutting rather than banding. The RSPCA successfully lobbied the Government for an amendment to the legislation to avoid this ambiguity. The legislation was amended to read that to dock the tail of an animal means to remove all or part of the tail whether by surgical or other means.

Andrew Paul Baker (18) of Colyton was charged with three charges of abandoning animals and **Andrew Richard Baker** (42) of Colyton was charged with providing information to an inspector which he knew to be false and misleading. He was also charged as the owner of a vehicle with failing to provide information about the name and address of the driver of the vehicle which was involved in the commission of an offence. Baker (junior) drove a motor vehicle which was owned by his father from Colyton to the neighbouring suburb of Minchinbury where he abandoned three kittens in a box on the side of the road. A witness to the incident contacted the RSPCA who collected the three kittens. When interviewed by the RSPCA, Baker (senior) failed to identify his son as the driver of his car and therefore as the person who dumped the kittens, claiming falsely that he (Baker senior) was the driver. In Mt Druitt Local Court on 22 February 2007, Andrew Paul Baker (junior) entered three pleas of guilty to abandoning kittens and was fined \$200 on each charge and ordered to pay \$67 in court costs. Andrew Richard Baker (senior) entered pleas of guilty to providing false information and failing to identify the driver of a vehicle. He was also fined \$200 on each charge and ordered to pay \$67 in court costs.

Challenges

The ongoing drought continues to affect most of the State, with between 78 percent and 94 percent of the State being drought declared during the reporting period. While all the RSPCA's inspectors appreciate the complexities associated with making animal-related decisions during periods of drought, we encourage people to seek advice from the Department of Primary Industries Drought Support workers. If it becomes necessary for RSPCA inspectors to become involved with the management of grazing livestock, we work closely with the Department of Primary Industries Livestock officers and representatives of the Rural Lands Protection Board in preparing management plans for drought affected livestock.

Animal hoarders

Every year we investigate complaints about the care and treatment of animals in the hands of animal hoarders. Animal hoarders may start with good intentions but progress to a point where they have an unsustainable number of animals. Most hoarders fail to see that they are doing anything wrong and are usually unco-operative with RSPCA inspectors. These situations are extremely difficult to manage and generally the only solution is prosecution and a prohibition order. Matters involving animal hoarders are expensive but for the animals they can have tragic consequences. Animals from these environments generally

have behaviour problems which limits their re-homing potential. Unfortunately this is a complex problem which cannot be resolved by the drafting and introduction of legislation alone.

Goals for 2007 - 2008

Over the next year, we will continue to improve the welfare of animals across the State by investigating cruelty complaints, being proactive about inspecting animal traders and continuing to be involved in animal rescues and emergency management, contributing to community and retaining our membership of various animal welfare working groups and committees.

Acknowledgements

Thank you to the NSW Fire Brigades for their ongoing support with the provision and maintenance of equipment and the training of inspectors.

RSPCA inspectors continue to rely on various organisations and private practice veterinarians. They are vital to our work and we look forward to maintaining our existing relationships and establishing new ones.

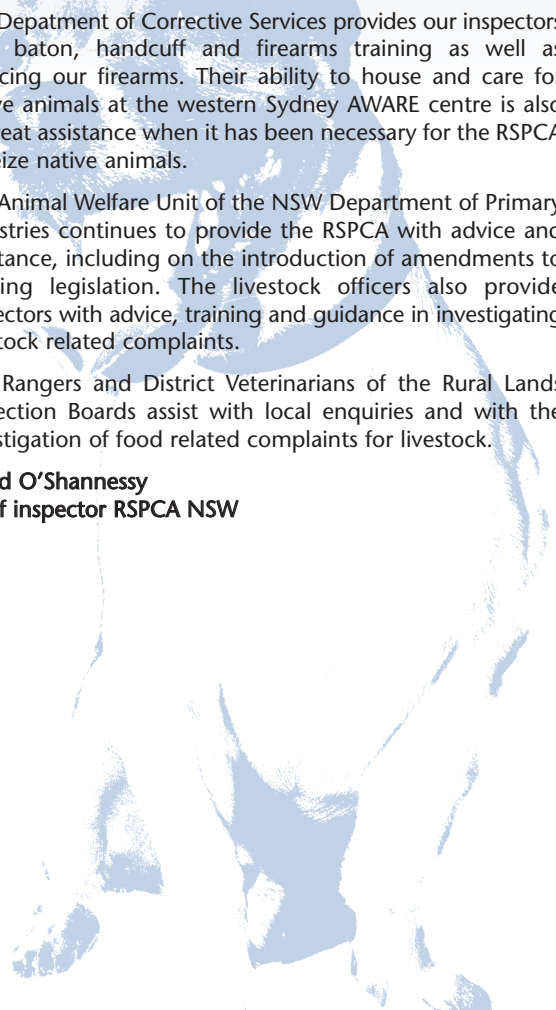
The NSW Police Service assists us in many ways. We especially rely on them to attend urgent animal cruelty complaints when we cannot get there. Police prosecutors represent the RSPCA at court mentions and in pleas of guilty. They also provide training for RSPCA inspectors in various aspects of law enforcement. We are also particularly thankful for the assistance of Rural Crime Investigators and officers attached to Country Local Area Commands for their attendance and assistance with livestock complaints.

The Department of Corrective Services provides our inspectors with baton, handcuff and firearms training as well as servicing our firearms. Their ability to house and care for native animals at the western Sydney AWARE centre is also of great assistance when it has been necessary for the RSPCA to seize native animals.

The Animal Welfare Unit of the NSW Department of Primary Industries continues to provide the RSPCA with advice and assistance, including on the introduction of amendments to existing legislation. The livestock officers also provide inspectors with advice, training and guidance in investigating livestock related complaints.

The Rangers and District Veterinarians of the Rural Lands Protection Boards assist with local enquiries and with the investigation of food related complaints for livestock.

David O'Shannessy
Chief inspector RSPCA NSW



Prosecutions 2006 - 2007

Prevention of Cruelty to Animals Act 200 / 1979 (as amended)

Section	Offence	2005 - 2006	2006 - 2007
Section 5(1)	Commit an Act of Cruelty	7	1
Section 5(3)(a)	Fail to Exercise Reasonable Care, Control, Supervision	12	39
Section 5(3)(b)	Fail to Alleviate Pain	2	6
Section 5(3)(c)	Fail to Provide Veterinary Treatment	129	265
Section 6(1)	Did Commit an Act of Aggravated Cruelty	822	128
Section 7(1)(a)	Carriage of Animal & Inflict Pain	-	2
Section 7(1)(b)	Authorise Carriage of Animal & Inflict Pain	-	2
Section 7(2A)	Fail to Tether Dog on Utility	2	3
Section 8(1)	Did Fail to Provide - Food, Water, Shelter	130	215
Section 9(1)	Confine an Animal	4	8
Section 10(1)(a)	Tether an Animal	3	2
Section 10(3)	Confine Bird by means of a Tether	7	-
Section 11	Abandon an Animal	3	4
Section 12(1)(a)	Did Dock the Tail of a Dog	11	4
Section 14(a)	Driver of Vehicle Striking Animal Fail to Alleviate Pain	2	-
Section 14(b)	Driver of Vehicle Striking Animal Fail to Inform Officer	3	-
Section 16(2)	Electric Collar - Sell, Possess, Use	1	1
Section 17	Possess Training or Fighting Spur	1	1
Section 23(1)	Set Steel Jaw Trap	-	2
Section 24B(1)(a)	Fail to Identify Driver of Vehicle who Commits an Offence	1	1
Section 28	Hinder an Officer	3	1
Section 29B(2)	Provide False Information	-	1
Section 31	Did Breach Prohibition Order	-	1
Section 33B & 33C	Did Knowingly Permit, Allow the Continuance or Aid and Abet an offence under the Act	8	-
Section 33D	Attempt Offence	-	3
Section 7(1) & 21(1)(b)	Animal Trades Regulations	1	14
		1152	704

Complaints, offences and prosecutions over past six years			
Year	Complaints	Offences	Defendants
2001 - 2002	23,369	346	106
2002 - 2003	12,594	442	119
2003 - 2004	12,748	656	112
2004 - 2005	12,502	1784	146
2005 - 2006	11,374	1092	103
2006 - 2007	11,812	704	140

Prosecution Summary RSPCA NSW 2006 - 2007

OFFENCE	BIRD	CAT	CATTLE	DEER	DOG	GOAT	HORSE	RABBIT G-PIG	SHEEP	TOTAL
Commit an act of cruelty	0	0	0	0	1	0	0	0	0	1
Fail to exercise reasonable care, control or supervision	0	0	2	1	4	0	0	0	32	39
Fail to alleviate pain	0	0	2	0	1	1	0	0	2	6
Fail to provide veterinary treatment	0	17	16	0	190	2	23	1	16	265
Commit an act of aggravated cruelty	1	15	44	1	29	2	5	1	30	128
Convey animal in a manner which inflicted pain	0	0	2	0	0	0	0	0	0	2
Authorise conveyance of an animal in a manner which inflicted pain	0	0	2	0	0	0	0	0	0	2
Fail to tether dog on open backed vehicle	0	0	0	0	3	0	0	0	0	3
Fail to provide proper and sufficient:										
Food	1	4	58	1	105	0	25	1	0	195
Water	0	0	2	1	14	0	0	0	3	20
Confined animal to be exercised	0	0	0	0	2	0	0	0	0	2
Confine animal in a small cage	0	0	0	0	6	0	0	0	0	6
Did tether an animal (heavy)	0	0	0	0	2	0	0	0	0	2
Did tether a bird by the leg	0	0	0	0	0	0	0	0	0	0
Did abandon an animal	0	0	0	0	0	0	0	0	0	0
Did dock the tail of a dog	0	0	0	0	4	0	0	0	0	4
Driver of vehicle fail to alleviate pain	0	0	0	0	0	0	0	0	0	0
Driver of vehicle striking an animal fail to inform officer	0	0	0	0	0	0	0	0	0	0
Did sell or possess electric collar	0	0	0	0	1	0	0	0	0	1
Did possess spurs	1	0	0	0	0	0	0	0	0	1
Abandon an animal	0	3	0	0	0	1	0	0	0	4
Set steel jaw trap	1	1	0	0	0	0	0	0	0	2
Fail to ID driver of vehicle who committed offence	0	1	0	0	0	0	0	0	0	1
Obstruct/hinder officer	0	0	0	0	1	0	0	0	0	1
Did knowingly provide false information	0	1	0	0	0	0	0	0	0	1
Did fail to comply with prohibition order	0	0	0	0	1	0	0	0	0	1
Did attempt to commit an offence	0	0	0	0	3	0	0	0	0	3

Prevention of Cruelty to Animals (Animal Trades)

Regulation 1996

Fail to provide water at all times	0	0	0	0	12	0	0	0	0	12
Fail to provide uncontaminated food	0	0	0	0	1	0	0	0	0	1
Fail to properly identify dog	0	0	0	0	1	0	0	0	0	1

Total by animal	4	42	128	4	381	6	53	3	83	704
Number of offenders	140									

Cruelty complaints by animal type 2006 - 2007

Complaint Code	Bird	Cat	Cattle	Crab/fish	Dog	Exotic	
Abandoned	16	232	1	5	432	1	
Animal park inspection	1	0	2	0	2	0	
Bushfire	0	0	3	0	0	0	
Cat up tree	0	24	0	0	0	0	
Circus inspection	0	0	0	0	0	5	
Cock fighting	0	0	0	0	0	0	
Concern for welfare	32	63	24	7	316	1	
Dead	9	27	90	6	74	0	
Dog fighting	0	0	0	0	12	0	
Drought	1	1	143	0	11	1	
Exercise inadequate	5	13	1	0	295	0	
Exposed to heat	22	3	5	1	178	0	
Feedlot inspection	0	0	2	0	0	0	
Food and water	106	552	524	8	3183	8	
Ill treatment	18	65	10	0	439	0	
Kennel inspection	0	4	0	0	27	0	
Killed	8	8	4	0	20	0	
Locked in car	0	4	0	0	74	0	
Locked in house	6	87	0	0	134	0	
Locked in laundry	0	5	0	0	7	0	
Locked in shed	2	4	0	0	55	0	
Locked in shop	0	6	0	0	3	0	
Locked in small pen	68	36	12	1	324	0	
Organised cruelty	0	0	0	0	0	0	
Other	53	179	66	22	609	10	
Overcrowded	28	15	8	34	24	0	
Pet shop inspection	92	31	0	12	131	0	
Poisoning	10	3	0	0	11	0	
Poultry inspection	0	0	0	0	0	0	
Premises inspection	2	0	0	0	8	0	
Requires rescue	42	173	31	0	104	1	
Riding school inspection	0	0	0	0	0	0	
Sale yard inspection	0	0	3	0	0	0	
Shelter inadequate	29	18	15	0	875	0	
Tied continually	5	24	16	0	1072	2	
Transport unsatisfactory	0	0	2	0	37	0	
Vet treatment	36	366	183	4	1228	5	
Premises inspection	28	15	0	0	725	0	
TOTAL	619	1958	1145	100	10410	34	

Farm	Fowl	Goat	Horse	Pig	Sheep	Natives	Small Pets	Total
0	17	6	25	1	10	3	17	766
0	1	1	2	0	1	3	1	14
0	0	0	0	0	0	0	0	3
0	0	0	0	0	0	0	0	24
0	0	0	0	0	0	2	0	7
0	6	0	0	0	0	0	0	6
3	14	11	65	2	23	6	24	591
5	12	12	39	2	53	9	14	352
0	0	0	1	0	0	0	0	13
1	3	1	180	1	45	1	0	389
0	7	0	17	1	1	1	3	344
0	4	5	20	4	6	4	15	267
0	0	0	0	1	0	0	0	3
15	96	111	1334	19	219	29	74	6278
0	17	9	17	3	8	16	5	607
0	0	0	0	1	0	0	1	33
0	1	5	1	0	0	5	1	53
0	1	0	0	0	0	0	0	79
0	0	0	3	0	0	1	6	237
0	0	0	0	0	0	0	0	12
0	2	0	5	0	1	0	0	69
0	0	0	0	0	0	0	0	9
6	31	5	38	8	13	15	28	585
0	0	0	0	0	0	0	1	1
9	43	30	101	9	54	27	31	1243
0	18	1	6	8	3	3	14	162
0	9	1	0	1	0	11	42	330
0	0	0	1	0	0	1	0	26
0	5	0	0	0	0	0	1	6
0	0	0	1	1	0	0	0	12
3	12	19	27	0	4	20	5	441
0	0	0	6	0	0	0	0	6
0	0	0	0	0	1	0	0	4
2	15	30	59	5	11	5	34	1098
2	5	37	50	1	10	0	2	1226
0	1	0	5	0	1	0	0	46
8	32	33	429	3	118	28	18	2491
0	23	6	10	0	0	3	27	837
54	375	323	2442	71	582	193	364	18670

The RSPCA's veterinary hospitals aim to prevent cruelty to animals by actively promoting their care and protection

Community Animal Welfare Scheme (CAWS)

The CAWS program continued to address the issue of unwanted companion animals through community education, local media awareness and targeted desexing programs in regional areas of the State. CAWS programs are run in collaboration with local councils, local veterinarians, the Australian Veterinary Association (AVA), Government departments and schools.

This year we were able to secure funding to substantially expand the CAWS programs through a very generous donation from the Cameron Family Foundation of \$250,000. This fabulous grant will continue to fund programs into next year and allow further growth. We continue to receive support from our suppliers, in the way of donated drugs and materials, including Fort Dodge, Jurox, Pfizer, Merial, Livingstones and Provet. Many councils have contributed with inkind and dollar donations and the AVA NSW Division generously donated \$10,000 towards education programs.

CAWS programs were run in Inverell, and twice in Bathurst, Bourke and, Dubbo as well as Griffith, Walgett and Coonamble. Education teams comprising an RSPCA vet and regional inspector have reached a large number of students, teaching responsible pet ownership, animal welfare and humane treatment of animals, as well as human safety concepts such as bite prevention. Over 1200 animals were desexed and many more treated and microchipped.

A Sydney University BSc (Vet) student is performing an analysis of the CAWS program documenting not only the benefits to animal welfare but also evaluating the impact of education programs on attitudes to the welfare of animals. It is very important to measure the strategies we use to deal with unwanted companion animals to ensure they are working and to determine if there are better ways forward to reduce the euthanasia of dogs and cats in pounds and shelters more quickly.

Veterinary hospitals

RSPCA Yagoona

A new computer system implemented in our veterinary clinics allows us to better analyse statistics and to analyse work which has benefits to animal welfare. It allows us to work more efficiently and to save money in the long term.

A generous donation from the Mary Kibble Trust allowed us to purchase a number of new infusion pumps to deliver life saving fluids to the sick animals in our isolation unit.

This year also saw the start of Pet Information nights. They have been extremely well received with up to 30 clients attending each session. These nights are run by dedicated veterinary nurses and provide new pet owners with information about all aspects of animal care and behaviour.

The Pets of Older People Scheme (POOPS) has expanded into western Sydney, as far as Wentworth Falls. There are 96 clients in the Sydney metropolitan area and there were 136 referrals over the reporting period, for 137 dogs, 99 cats and 57 others (birds and rabbits). In the first half of 2007 alone we received almost 100 referrals from community groups, healthcare workers, social workers and members of the public. We are working towards integrating POOPS into the health system and ensuring it is recognised as an essential service to the elderly in the community. Although we have managed to recruit many foster carers and dog walkers this year we are always in need of more as we expand our services.

RSPCA Hunter

The acquisition of a new dental surgical suite through the Mary Kibble Grant now allows us to extract large molars and canine teeth more easily.

There is increasing interest amongst staff to become involved in community education. We now have three qualified Safe Pets Out There (SPOT) presenters covering Newcastle City and surrounding areas.

The first year after the RSPCA's move from Elermore Vale and taking on the Newcastle City Council (NCC) pound contract, has proved a steep learning curve. However we are now comfortable with our new roles and many of our previous clients are coming to the new premises at Rutherford and at Tighes Hill. Sixty percent of our current clients are new clients.

RSPCA Broken Hill

Nine new kennels have been purchased for the shelter, with the help of Broken Hill South Rotary Club. And, thanks to RSPCA Broken Hill branch, roller shutters at the front of the kennels are now motorised.

The clinic has seen the usual mix of cases - domestic animals, wildlife and livestock with the addition of a male alpaca, admitted for desexing!

Dr Mark Lawrie

Chief Veterinarian, RSPCA NSW



Pound numbers - Tighes Hill

Over the past 12 months, 1189 dogs were received and 507 were released back to their owners with 15 euthanased and 586 transferred to RSPCA Rutherford shelter. Others were assessed for re-homing.

Of the 1256 cats received, only 21 were returned to their owners. Two hundred and thirteen cats were euthanased because they were feral, or had severe injuries or disease. The low numbers of reclaimed cats reflects poor compliance with microchipping and registration regulations for cats under the Companion Animals Act. Less than 20 per cent of cats over six months of age who were brought to the Tighes Hill pound were microchipped.

The Tighes Hill pound was established as a day holding facility. After 24 hours, animals are transferred to RSPCA Rutherford. It is thought that this puts more pressure on people to reclaim their animals quickly.



Training was restructured during the reporting year across the State and we have changed our registered training organisation from Western Sydney TAFE to the Animal Industries Resource Centre.

This will see an elective component added to basic training for new staff members so they can decide on a career path with the RSPCA. It also means that staff will be able to obtain higher qualifications in their animal studies.

As part of a broad based Certificate III in Companion Animal Services, we now offer different subjects so staff can choose the areas which suit their employment and interests.

They include customer service, animal first aid for ambulance drivers, behavioural studies as well as basic animal care for animal attendants.

Staff can then go on to further education with a

specialty tailored Certificate IV in Pound Management. This will enable our staff to obtain qualifications in their area of expertise.

Over the year, microchipping courses have been run in regional areas. Local Animal Control Officers in far western NSW and the NSW highlands have now become qualified microchippers by attending RSPCA training.

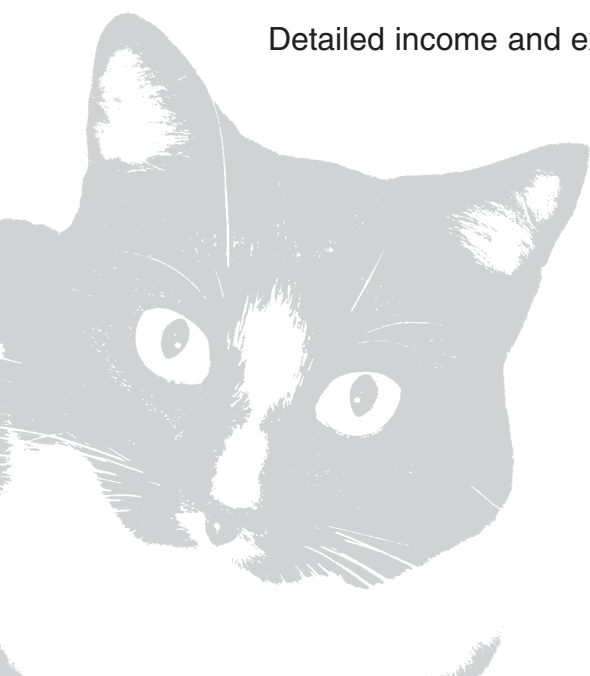
By offering this training, we have further opened lines of communication and co-operation with regional councils and this will lead to better outcomes in animal welfare.

This has been a busy and productive year. There are approximately 60 trainees enrolled in our new, flexible training. This figure has been steadily growing over the last few years as training becomes more popular. All new staff are offered the option to become trainees and most of them do so.

**The Royal Society for the Prevention of
Cruelty to Animals New South Wales**

**Financial Report for the Financial Year
Ended 30 June 2007**

	Page
Directors' report	18
Auditors' independence declaration	21
Independent auditors' report	22
Directors' declaration	24
Income statement	25
Balance sheet	26
Statement of recognised income and expense	27
Cash flow statement	28
Notes to the financial statements	29
Detailed income and expenditure statement - unaudited	46



Directors' report

The Directors of The Royal Society for the Prevention of Cruelty to Animals New South Wales ("the Society") submit herewith the annual financial report of the Society for the financial year ended 30 June 2007. In order to comply with the provisions of the Corporations Act 2001, the Directors report as follows:

The names and particulars of the Directors of the Society during or since the end of the financial year are:

Directors

Mr Andrew Wozniak, President
Dr Peter Wright, Vice President
Mr Graham Hall, Vice President
Mr Doug Dean, Co-Treasurer
Ms Wendy Barrett, Co-Treasurer
Mrs Dulcie Goldstien, Director
Mr Paul O'Donnell, Director
Mrs Carol Youdan, Director
Ms Neen Brown, Director

Particulars of Directors

The following particulars are given in respect of each of the Directors of the Society:

Mr A Wozniak LLB (Accredited Specialist in Criminal Law) – Mr Wozniak is currently president and has served on the NSW Board for nine years. Mr Wozniak is a legal advocate for the RSPCA, a solicitor and life member of the Society.

Dr P Wright BVSc, Grad Dip Ag Ec – Dr Wright is a veterinarian who runs his own practice at Goulburn, NSW and treats domestic pets, livestock, wildlife and other exotic species. Dr Wright has a long involvement with animal care groups including WIRES and in assisting the local RSPCA inspector.

Mr G Hall – Mr Hall has been an RSPCA Board member for over 20 years. Mr Hall is a grazier and a partner in a family property near Young raising shorthorn cattle, fine wool merino sheep and crops.

Mr D Dean B Comm, FCPA, FAIM – Mr Dean is managing director of environmental waste management company, Veolia. He is the longest serving CEO in Australia's waste management and industrial services sectors. He is also chairman of the Veolia group in New Zealand and South Africa and director of the group in the US, China, Taiwan, Singapore and the Philippines.

Ms W Barrett EMBA, B Bus, Dip Corporate Director, Grad Dip IR – Ms Barrett has held a previous role of President of the RSPCA Auxiliary and has a special interest in progressing animal welfare, animal care and ethics. She is the manager of Business Strategy and Reporting for the Minister of Transport.

Mrs D Goldstien – Mrs Goldstien's life is dominated by animal welfare, and as a Director of Annangrove Dog Training Centre, her greatest joy is to work with and rehabilitate problem dogs. She was granted Honorary Life Membership of RSPCA in 1979 and has always been proud to support this organisation.

Mr P O'Donnell LLB (Hons) – Barrister of Supreme Court of NSW, Mr O'Donnell was elected to the Board in October 1998. A Barrister at Law, Mr O'Donnell is particularly interested in the Society's efforts to respond to animal cruelty.

Mrs C Youdan – Mrs Youdan has had the roles of president, vice president and secretary of the Taree branch for over 14 years. A company director, Mrs Youdan was elected to the Board in 1996.

Mrs N Brown – Mrs Brown is Branch President and Animal Care Coordinator at the Armidale Branch.

Company secretary

Mr B Murphy – Mr Murphy is the Chief Executive Officer of the RSPCA and has been company secretary since 30 May 2003.

Principal activities

The principal activity of the Society in the course of the financial year was the prevention of cruelty to animals through the operation of shelters, clinics, and the sale of animals and associated products.

Results

The net deficit of the Society for the year from principal activities was \$514,498 (2006: surplus \$7,444,969).

Dividends

The Society is a non-profit organisation and no dividends are payable.

Review of operations

During the financial year, the Society conducted the activities described above resulting in the deficit as shown above. This deficit was predominately derived by a decline in legacies received during the financial year, as well as a decline in the profit achieved from the sale of equity investments.

Changes in state of affairs

There was no significant change in the state of affairs of the Society during the financial year.

Subsequent events

There has not been any matter or circumstance occurring subsequent to the end of the financial year that has significantly affected, or may significantly affect, the operations of the Society, the results of its operations, or the state of affairs of the Society in future financial years.

Future developments

It is the expectation of the Directors that the Society will further expand its activities where possible in the prevention of cruelty to animals and it is expected that the cost of these operations will increase but will be met from the traditional sources of income available to the Society.

Directors' benefits

Since the end of the previous financial year, no Director of the Society has received or has become entitled to receive a benefit by reason of a contract made by the Society or a related corporation with him or her or with a firm of which he or she is a member or with a company in which he or she has a substantial financial interest, other than disclosed in note 26 to the financial statements.

Indemnification of officers and auditors

During the financial year, the Society paid a premium in respect of a contract insuring the Directors of the Society (as named above), the Society secretary, and all employees of the Society against a liability incurred as such a director, secretary, officer, or employee to the extent permitted by the Corporations Act 2001. The contract of insurance prohibits disclosure of the nature of the liability and the amount of the premium.

The Society has not otherwise, during or since the financial year, indemnified or agreed to indemnify an officer or auditor of the Society or of any related body corporate against a liability incurred as such an officer or auditor.

FINANCIAL STATEMENTS

Directors' meetings

The following table sets out the number of Directors' meetings held during the financial year and the number of meetings attended by each Director (while they were a Director). During the year, there were 12 board meetings held.

Directors	Board of Directors' Meetings	
	Held	Attended
Dr P Wright	12	10
Mr P O'Donnell	12	9
Mrs C Youdan	12	9
Ms W Barrett	12	9
Mr A Wozniak	12	10
Mr G Hall	12	11
Mrs D Goldstien	12	12
Mr D Dean	12	9
Mrs N Brown	12	10

Auditor's independence declaration

The auditor's independence declaration is included on page 21 of the financial report.

Signed this 31th day of October 2007, in accordance with a resolution of the Directors

On behalf of the Directors



Mr A Wozniak
President



Ms Wendy Barrett
Co-Treasurer



Mr Douglas Dean
Co-Treasurer

Deloitte.

Deloitte Touche Tohmatsu
ABN 74 490 121 060

The Barrington
Level 10
10 Smith Street
Parramatta NSW 2150
PO Box 38
Parramatta NSW 2124 Australia

DX 28485
Tel: +61 (0) 2 9840 7000
Fax: +61 (0) 2 9840 7001
www.deloitte.com.au

The Board of Directors
The Royal Society for the Prevention of
Cruelty to Animals New South Wales
201 Rookwood Road
YAGOONA NSW 2199

Dear Board Members

The Royal Society for the Prevention of Cruelty to Animals New South Wales

In accordance with section 307C of the Corporations Act 2001, I am pleased to provide the following declaration of independence to the Directors of The Royal Society for the Prevention of Cruelty to Animals New South Wales.

As lead audit partner for the audit of the financial statements of The Royal Society for the Prevention of Cruelty to Animals New South Wales for the financial year ended 30 June 2007, I declare that to the best of my knowledge and belief, there have been no contraventions of:

- (i) the auditor independence requirements of the Corporations Act 2001 in relation to the audit; and
- (ii) any applicable code of professional conduct in relation to the audit.

Yours sincerely



DELOITTE TOUCHE TOHMATSU



Eric Angelucci
Partner
Chartered Accountants

31 October 2007

Deloitte.

Deloitte Touche Tohmatsu
ABN 74 490 121 060

The Barrington
Level 10
10 Smith Street
Parramatta NSW 2150
PO Box 38
Parramatta NSW 2124 Australia

DX 28485
Tel: +61 (0) 2 9840 7000
Fax: +61 (0) 2 9840 7001
www.deloitte.com.au

Independent auditor's report to the members of The Royal Society for the Prevention of Cruelty to Animals New South Wales

We have audited the accompanying financial report of The Royal Society for the Prevention of Cruelty to Animals New South Wales, which comprises the balance sheet as at 30 June 2007, and the income statement, cash flow statement and statement of recognised income and expense for the year ended on that date, a summary of significant accounting policies, other explanatory notes and the Directors' declaration of the Society as set out on pages 24 to 44. In addition, we have audited The Royal Society for the Prevention of Cruelty to Animals New South Wales compliance with specific requirements of the *Charitable Fundraising Act 1991* for the year ended 30 June 2007.

Directors' Responsibility for the Financial Report and Compliance with the Charitable Fundraising Act 1991

The Directors of the Society are responsible for the preparation and fair presentation of the financial report in accordance with Australian Accounting Standards (including the Australian Accounting Interpretations) and the *Corporations Act 2001* and for compliance with the *Charitable Fundraising Act 1991*. This responsibility includes establishing and maintaining internal control relevant to compliance with requirements of the *Charitable Fundraising Act 1991* and the preparation and fair presentation of the financial report that is free from material misstatement, whether due to fraud or error; selecting and applying appropriate accounting policies; and making accounting estimates that are reasonable in the circumstances.

Auditor's Responsibility

Our responsibility is to express an opinion on the Society's compliance with specific requirements of the *Charitable Fundraising Act 1991* and the financial report based on our audit. We conducted our audit in accordance with Australian Auditing Standards. These Auditing Standards require that we comply with relevant ethical requirements relating to audit engagements and plan and perform the audit to obtain reasonable assurance whether the Society has complied with specific requirements of the *Charitable Fundraising Act 1991* and the financial report is free from material misstatement.

An audit involves performing procedures to obtain audit evidence about the Society's compliance with specific requirements of the *Charitable Fundraising Act 1991* and amounts and disclosures in the financial report. The procedures selected depend on the auditor's judgement, including the assessment of the risks of non-compliance with specific requirements of the *Charitable Fundraising Act 1991* and material misstatement of the financial report, whether due to fraud or error. In making those risk assessments, the auditor considers internal control relevant to the entity's compliance with the *Charitable Fundraising Act 1991* and preparation and fair presentation of the financial report in order to design audit procedures that are appropriate in the circumstances, but not for the purpose of expressing an opinion on the effectiveness of the entity's internal control. An audit also includes evaluating the appropriateness of accounting policies used and the reasonableness of accounting estimates made by the Directors, as well as evaluating the overall presentation of the financial report.

Deloitte.

Inherent Limitations

Because of the inherent limitations of any compliance procedure, it is possible that fraud, error, or non-compliance with the *Charitable Fundraising Act 1991* may occur and not be detected. An audit is not designed to detect all weaknesses in The Royal Society for the Prevention of Cruelty to Animals New South Wales' compliance with the *Charitable Fundraising Act 1991* as an audit is not performed continuously throughout the period and the tests are performed on a sample basis.

Any projection of the evaluation of compliance with the *Charitable Fundraising Act 1991* to future periods is subject to the risk that the procedures, may become inadequate because of changes in conditions, or that the degree of compliance with them may deteriorate.

We believe that the audit evidence we have obtained is sufficient and appropriate to provide a basis for our audit opinion.

Auditor's Independence Declaration

In conducting our audit, we have complied with the independence requirements of the *Corporations Act 2001*.

Basis for Qualified Auditor's Opinion

The financial report of The Royal Society for the Prevention of Cruelty to Animals New South Wales for the year ended 30 June 2005 was not audited by our firm. As detailed in our audit report dated 27 October 2006 on the 30 June 2006 financial report, we were unable to perform alternative audit procedures to enable us to form an opinion on the comparatives for 30 June 2005. The results of the Society for the year ended 30 June 2006 would be affected to the extent of any misstatement of the 30 June 2005 balance sheet. Our audit report on the 30 June 2006 financial report was qualified on that basis.

Accordingly, we are not in a position to and do not express an opinion on the income statement, statement of recognised income and expense and the cash flow statement for the year ended 30 June 2006 which are included for comparative purposes.

Qualified Auditor's Opinion

In our opinion, except for the effects of such adjustments, if any, as might have been determined to be necessary had we been able to satisfy ourselves regarding the comparatives:

- (a) the financial report of The Royal Society for the Prevention of Cruelty to Animals New South Wales is in accordance with the *Corporations Act 2001*, including:
 - (i) giving a true and fair view of the Society's financial position as at 30 June 2007 and of its performance for the year ended on that date; and
 - (ii) complying with Australian Accounting Standards (including the Australian Accounting Interpretations) and the *Corporations Regulations 2001*;
- (b) the financial report agrees to the underlying financial records of The Royal Society for the Prevention of Cruelty to Animals New South Wales, that have been maintained in accordance with the Act and its regulations for the year ended 30 June 2007; and
- (c) monies received by The Royal Society for the Prevention of Cruelty to Animals New South Wales, as a result of fundraising appeals conducted during the year ended 30 June 2007, have been accounted for and applied in accordance with the Act and its regulations.



DELOITTE TOUCHE TOHMATSU



Eric Angelucci
Partner
Chartered Accountants
Parramatta, 31 October 2007

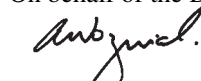
Directors' declaration

The Directors declare that:

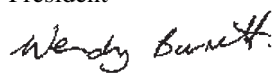
- (a) in the Directors' opinion, there are reasonable grounds to believe that the Society will be able to pay its debts as and when they become due and payable;
- (b) in the Directors' opinion, the attached financial statements and notes thereto are in accordance with the Corporations Act 2001, including compliance with accounting standards and giving a true and fair view of the financial position and performance of the Society.

Signed in accordance with a resolution of the Directors made pursuant to s. 295(5) of the Corporations Act 2001.

On behalf of the Directors



Mr A Wozniak
President



Ms Wendy Barrett
Co-Treasurer



Mr Douglas Dean
Co-Treasurer

Sydney, 31 October 2007

Declaration in accordance with the Charitable Fundraising Act 1991

I, Andrew Wozniak, President of The Royal Society for the Prevention of Cruelty to Animals, New South Wales, state that in my opinion:

- (a) the accompanying Income Statement gives a true and fair view of all income and expenditure of the Society with respect to fundraising appeals; and
- (b) the accompanying Balance Sheet gives a true and fair view of the state of affairs with respect to fundraising appeals; and
- (c) provisions of the Charitable Fundraising Act 1991, the regulations under the Act and the conditions attached to the Society's fundraising authority have been complied with; and
- (d) internal controls exercised by the Society are appropriate and effective in accounting for all income received and applied from any fundraising appeals.

Signed this 31th day of October 2007



Mr Andrew Wozniak
President

FINANCIAL STATEMENTS

Income Statement for the financial year ended 30 June 2007

	<u>Note</u>	<u>2007</u> \$	<u>2006</u> \$
Revenue	4	21,619,528	24,085,251
Finance costs		(807,525)	(282,395)
Operating deficit before legacies and grants		(7,280,752)	(3,494,201)
Legacies – cash		6,047,254	8,799,170
Legacies – properties		295,000	1,711,000
Government grant		424,000	429,000
(Deficit)/Surplus for the year	5	(514,498)	7,444,969

Notes to the financial statements are included on pages 29 to 44.

FINANCIAL STATEMENTS

Balance Sheet as at 30 June 2007

	Note	2007 \$	2006 \$
Current Assets			
Cash and cash equivalents	6	2,698,623	874,040
Trade and other receivables	7	1,452,911	826,230
Inventories	8	730,423	663,129
Other financial assets	9	912,500	737,055
Other	10	16,996	51,496
Total Current Assets		<u>5,811,453</u>	<u>3,151,950</u>
Non-Current Assets			
Other financial assets	9	33,900,596	36,673,389
Property, plant and equipment	11	39,642,319	30,150,085
Total Non-Current Assets		<u>73,542,915</u>	<u>66,823,474</u>
Total Assets		<u>79,354,368</u>	<u>69,975,424</u>
Current Liabilities			
Trade and other payables	12	3,533,607	2,483,270
Provisions	13	1,015,678	980,476
Borrowings	14	150,462	150,462
Total Current Liabilities		<u>4,699,747</u>	<u>3,614,208</u>
Non-Current Liabilities			
Provisions	13	661,638	533,486
Borrowings	14	10,071,448	4,900,000
Total Non-Current Liabilities		<u>10,733,086</u>	<u>5,433,486</u>
Total Liabilities		<u>15,432,833</u>	<u>9,047,694</u>
Net Assets		<u>63,921,535</u>	<u>60,927,730</u>
Members' Equity and Specific Funds			
Specific funds	15	346,436	346,436
Accumulated funds	19	44,611,072	45,125,570
Reserves	20	18,964,027	15,455,724.
Total Equity and Funds		<u>63,921,535</u>	<u>60,927,730</u>

Notes to the financial statements are included on pages 29 to 44.

FINANCIAL STATEMENTS

Statement of recognised income and expense for the financial year ended 30 June 2007

	<u>2007</u>	<u>2006</u>
	\$	\$
(Deficit)/Surplus for the year	(514,498)	7,444,969
Transfer to the profit and loss on completion of Legacy shelter project	-	(1,221,384)
Transfer to the profit and loss on sale of available for sale assets	-	(6,036,744)
	<u>(514,498)</u>	<u>186,841</u>
Available-for-sale investments: Valuation gain taken to equity	<u>3,508,303</u>	<u>2,025,074</u>
Total recognised income and expense for the period	<u><u>2,993,805</u></u>	<u><u>2,211,915</u></u>

Notes to the financial statements are included on pages 29 to 44.

FINANCIAL STATEMENTS

Cash flow statement for the financial year ended 30 June 2007

	Note	2007 \$	2006 \$
Cash flow from operating activities			
Receipts from members and customers		11,852,176	11,031,240
Payments to suppliers and employees		(25,887,053)	(25,423,396)
Donations received		1,774,210	2,601,048
Legacies received		6,047,254	8,799,170
Government subsidy		424,000	-
Subscriptions		65,712	42,751
Interest paid		(807,525)	(282,395)
Net cash outflow from operating activities	22(b)	(6,531,226)	(3,231,582)
Cash flow from investing activities			
Rent received		571,757	601,466
Interest received		183,349	161,369
Dividends received		3,097,606	3,175,157
Proceeds for the sale of property, plant and equipment		6,633,423	5,439,919
Payment for property, plant and equipment		(17,129,805)	(9,586,532)
Net proceeds/(payments) for investments		9,828,031	(839,076)
Net cash inflow/(outflow) from investing activities		3,184,361	(1,047,697)
Cash flow from financing activities			
Proceeds from capital works borrowings		5,171,448	4,900,000
Net cash inflow from financing activities		5,171,448	4,900,000
Net increase in cash and cash equivalents		1,824,583	620,721
Cash and cash equivalents at the beginning of the financial year		874,040	253,319
Cash and cash equivalents at the end of the financial year	22(a)	2,698,623	874,040

Notes to the financial statements are included on pages xx to xx.

Notes to the financial statements for the financial year ended 30 June 2007

1. Adoption of new and revised Accounting Standards

In the current year, the Society has adopted all of the new and revised Standards and Interpretations issued by the Australian Accounting Standards Board (AASB) that are relevant to its operations and effective for the current annual reporting period. There have been no material changes in the Society's accounting policies as a result of the adoption of these new and revised standards in the current annual reporting period.

At the date of authorisation of the financial report, the Society has considered those Accounting Standards and Interpretations that were issued but not yet effective. It has been concluded that these Accounting Standards and Interpretations would not have a material impact to the Society's financial statements in future periods.

2. Significant accounting policies

Statement of compliance

The financial report is a general purpose financial report which has been prepared in accordance with the Corporations Act 2001, Accounting Standards and Interpretations, and complies with other requirements of the law.

Accounting Standards include Australian equivalents to International Financial Reporting Standards ('A-IFRS').

The financial statements were authorised for issue by the Directors on 31st day of October 2007.

Basis of Preparation

The financial report has been prepared on the basis of historical cost, except for the revaluation of certain non-current assets and financial instruments. Cost is based on the fair values of the consideration given in exchange for assets. All amounts are presented in Australian dollars, unless otherwise stated.

The following significant accounting policies have been adopted in the preparation and presentation of the financial report.

(a) Branch accounts

The financial statements comprise the accounts of the Society and all its Branches. The financial statements are inclusive of Branch balances at balance date and transactions during the year, after elimination of balances and transactions between Branches and Head Office. A listing of Branches is shown in note 29.

(b) Borrowing costs

Borrowing costs directly attributable to the acquisition, construction or production of qualifying assets, which are assets that necessarily take a substantial period of time to get ready for their intended use or sale, are added to the cost of those assets, until such time as the assets are substantially ready for their intended use or sale. Investment income earned on the temporary investment of specific borrowings pending their expenditure on qualifying assets is deducted from the borrowing costs eligible for capitalisation. All other borrowing costs are recognised in profit or loss in the period in which they are incurred.

Notes to the financial statements for the financial year ended 30 June 2007

2. Significant accounting policies (continued)

(c) Cash and cash equivalents

Cash comprises cash on hand and demand deposits. Cash equivalents are short-term, highly liquid investments that are readily convertible to known amounts of cash and which are subject to an insignificant risk of changes in value. Bank overdrafts are shown within borrowings in current liabilities in the balance sheet.

(d) Employee benefits

A liability is recognised for benefits accruing to employees in respect of wages and salaries, annual leave and long service leave when it is probable that settlement will be required and they are capable of being measured reliably.

Liabilities recognised in respect of employee benefits expected to be settled within 12 months, are measured at their nominal values using the remuneration rate expected to apply at the time of settlement.

Liabilities recognised in respect of employee benefits which are not expected to be settled within 12 months are measured as the present value of the estimated future cash outflows to be made by the Society in respect of services provided by employees up to reporting date.

Defined contribution plans

Contributions to defined contribution superannuation plans are expensed when incurred.

(e) Financial assets

Investments are recognised and derecognised on trade where the purchase or sale of an investment is under a contract whose terms require delivery of the investment within the timeframe established by the market concerned, and are initially measured at fair value, net of transaction costs except for those financial assets classified as at fair value through profit or loss which are initially measured at fair value.

Other financial assets are classified into the following specified categories: financial assets 'at fair value through profit or loss', 'loans to other entities at amortised cost', 'available-for-sale' financial assets, and 'receivables'. The classification depends on the nature and purpose of the financial assets and is determined at the time of initial recognition.

Available-for-sale financial assets

Certain shares and investments held by the Society are classified as being available-for-sale and are stated at fair value. Fair value determined by reference to the market value price for the shares and investments. Gains and losses arising from changes in fair value are recognised directly in the investments revaluation reserve with the exception of impairment losses and interest calculated using the effective interest method on monetary assets which are recognised directly in profit or loss. Where the investment is disposed of or is determined to be impaired, the cumulative gain or loss previously recognised in the investments revaluation reserve is include in profit or loss for the period.

Unlisted trusts

Unlisted trusts are brought to account at market value where received by legacy, otherwise at cost. Distributions are brought to account as they are received.

Notes to the financial statements for the financial year ended 30 June 2007

2. Significant accounting policies (continued)

(e) Financial assets (continued)

Dividends on available-for-sale equity instruments are recognised in profit and loss when the Society's right to receive payments is established.

Loans and receivables

Trade receivables, loans, and other receivables that have fixed or determinable payments that are not quoted in an active market are classified as 'loans and receivables'. Loans and receivables are measured at amortised cost using the effective interest method less impairment.

Interest is recognised by applying the effective interest rate.

Impairment of financial assets

Financial assets, other than those at fair value through profit or loss, are assessed for indicators of impairment at each balance sheet date. Financial assets are impaired where there is objective evidence that as a result of one or more events that occurred after the initial recognition of the financial asset the estimated future cash flows of the investment have been impacted. For financial assets carried at amortised cost, the amount of the impairment is the difference between the asset's carrying amount and the present value of estimated future cash flows, discounted at the original effective interest rate.

The carrying amount of the financial asset is reduced by the impairment loss directly for all financial assets with the exception of trade receivables where the carrying amount is reduced through the use of an allowance account. When a trade receivable is uncollectible, it is written off against the allowance account. Subsequent recoveries of amounts previously written off are credited against the allowance account. Changes in the carrying amount of the allowance account are recognised in profit or loss.

With the exception of available-for-sale equity instruments, if, in a subsequent period, the amount of the impairment loss decreases and the decrease can be related objectively to an event occurring after the impairment was recognised, the previously recognised impairment loss is reversed through profit or loss to the extent the carrying amount of the investment at the date the impairment is reversed does not exceed what the amortised cost would have been had the impairment not been recognised.

In respect of available-for-sale equity instruments, any subsequent increase in fair value after an impairment loss is recognised directly in equity.

Notes to the financial statements for the financial year ended 30 June 2007

2. Significant accounting policies (continued)

(f) Government grants

Government grants are assistance by the government in the form of transfers of resources to the Society in return for past or future compliance with certain conditions relating to the operating activities of the entity. Government grants include government assistance where there are no conditions specifically relating to the operating activities of the Society other than the requirement to operate in certain regions or industry sectors. Government grants are not recognised until there is reasonable assurance that the Society will comply with the conditions attaching to them and the grants will be received.

Government grants whose primary condition is that the Society should purchase, construct or otherwise acquire long-term assets are recognised as deferred income in the balance sheet and recognised as income on a systematic and rational basis over the useful lives of the related assets.

Other government grants are recognised as income over the periods necessary to match them with the related costs which they are intended to compensate, on a systematic basis. Government grants that are receivable as compensation for expenses or losses already incurred or for the purpose of giving immediate financial support to the Society with no future related costs are recognised as income of the period in which it becomes receivable.

(g) Impairment of other tangible assets

At each reporting date, the entity reviews the carrying amounts of its tangible assets to determine whether there is any indication that those assets have suffered an impairment loss. If any such indication exists, the recoverable amount of the asset is estimated in order to determine the extent of the impairment loss (if any). Where the asset does not generate cash flows that are independent from other assets, the entity estimates the recoverable amount of the cash-generating unit to which the asset belongs. Where a reasonable and consistent basis of allocation can be identified, corporate assets are also allocated to individual cash-generating units, or otherwise they are allocated to the smallest group of cash-generating units for which a reasonable and consistent allocation basis can be identified.

Recoverable amount is the higher of fair value less costs to sell and value in use. In assessing value in use, the estimated future cash flows are discounted to their present value using a pre-tax discount rate that reflects current market assessments of the time value of money and the risks specific to the asset for which the estimates of future cash flows have not been adjusted. If the recoverable amount of an asset (or cash-generating unit) is estimated to be less than its carrying amount, the carrying amount of the asset (cash-generating unit) is reduced to its recoverable amount. An impairment loss is recognised in profit or loss immediately, unless the relevant asset is carried at fair value, in which case the impairment loss is treated as a revaluation decrease.

Where an impairment loss subsequently reverses, the carrying amount of the asset (cash-generating unit) is increased to the revised estimate of its recoverable amount, but only to the extent that the increased carrying amount does not exceed the carrying amount that would have been determined had no impairment loss been recognised for the asset (cash-generating unit) in prior years. A reversal of an impairment loss is recognised in profit or loss immediately, unless the relevant asset is carried at fair value, in which case the reversal of the impairment loss is treated as a revaluation increase.

Notes to the financial statements for the financial year ended 30 June 2007

2. Significant accounting policies (continued)

(h) Income tax

The Society is exempt from income tax.

(i) Inventories

Inventories are valued at the lower of cost and net realisable value. Costs, including an appropriate portion of fixed and variable overhead expenses, are assigned to inventory on hand by the method most appropriate to each particular class of inventory, with the majority being valued on a first in first out basis. Net realisable value represents the estimated selling price less all estimated costs of completion and costs necessary to make the sale.

(j) Revenue

Revenue is measured at the fair value of the consideration received or receivable.

Sale of goods

Revenue from the sale of goods is recognised when all the following conditions are satisfied:

- the Society has transferred to the buyer the significant risks and rewards of ownership of the goods;
- the Society retains neither continuing managerial involvement to the degree usually associated with ownership nor effective control over the goods sold;
- the amount of revenue can be measured reliably;
- it is probable that the economic benefits associated with the transaction will flow to the entity; and
- the costs incurred or to be incurred in respect of the transaction can be measured reliably.

Rendering of services

Revenue from a contract to provide services is recognised by reference to the stage of completion of the contract. The stage of completion of the contract is dependent on the services being provided.

Royalties

Royalty revenue is recognised on an accrual basis in accordance with the substance of the relevant agreement. Royalties determined on a time basis are recognised on a straight-line basis over the period of the agreement.

Dividend and interest revenue

Dividend revenue from investments is recognised when the shareholder's right to receive payment has been established. Interest revenue is accrued on a time basis, by reference to the principal outstanding and at the effective interest rate applicable, which is the rate that exactly discounts estimated future cash receipts through the expected life of the financial asset to that asset's net carrying amount.

Notes to the financial statements for the financial year ended 30 June 2007

2. Significant accounting policies (continued)

(k) Goods and services tax

Revenues, expenses and assets are recognised net of the amount of goods and services tax (GST), except:

- i. where the amount of GST incurred is not recoverable from the taxation authority, it is recognised as part of the cost of acquisition of an asset or as part of an item of expense; or
- ii. for receivables and payables which are recognised inclusive of GST.

The net amount of GST recoverable from, or payable to, the taxation authority is included as part of receivables or payables.

Cash flows are included in the cash flow statement on a gross basis. The GST component of cash flows arising from investing and financing activities which is recoverable from, or payable to, the taxation authority is classified as operating cash flows.

(l) Specific Funds

Income and expenditure relating to Specific Funds is brought to account through the Income Statement. An amount equivalent to the income and expenditure is transferred to/from the Specific Fund from/to Accumulated Funds. Capital expenditure incurred within the terms of the Specific Funds is capitalised in the financial statements of the Society as property, plant and equipment and depreciated accordingly. An amount equivalent to the expenditure is transferred from the Specific Fund to Accumulated Funds.

(m) Payables

Trade payables and other accounts payable are recognised when the Society becomes obliged to make future payments resulting from the purchase of goods and services.

(n) Property, plant and Equipment

Land and buildings, and plant and equipment are stated at cost less accumulated depreciation and impairment. Cost includes expenditure that is directly attributable to the acquisition of the item. In the event that settlement of all or part of the purchase consideration is deferred, cost is determined by discounting the amounts payable in the future to their present value as at the date of acquisition. Land and buildings acquired by Legacy are brought to account at fair value at the date of transfer of ownership, which is taken to be the asset's deemed cost at this time.

Depreciation is provided on property, plant and equipment, including freehold buildings but excluding land. Depreciation is calculated on a straight line basis so as to write off the net cost of other revalued amount of each asset over its expected useful life to its estimated residual value. The estimated useful lives, residual values and depreciation method is reviewed at the end of each annual reporting period.

The following estimated useful lives are used in the calculated depreciation:

Buildings	20 years
Animal shelters	20 – 50 years
Motor vehicles	5 years
Plant, furniture and equipment	5 – 10 years

FINANCIAL STATEMENTS

2. Significant accounting policies (continued)

(o) Leased assets

Leases are classified as finance leases when the terms of the lease transfer substantially all the risks and rewards incidental to ownership of the leased asset to the lessee. All other leases are classified as operating leases.

Society as lessee

Operating lease payments are recognised as an expense on a straight-line basis over the lease term, except where another systematic basis is more representative of the time pattern in which economic benefits from the lease asset are consumed. Contingent rentals arising under operating leases are recognised as an expense in the period in which they are incurred.

(p) Comparative amounts

Where required, the figures for the previous year are reclassified to facilitate comparison.

3. Error

These financial statements contain a correction to a prior period error and restatement of comparatives. The prior period error is an omission of \$6,036,744 in the surplus for the year as a result of the cumulative gain for investments disposed which was recognised in the available for sale investment revaluation reserve directly in equity for the financial year ended 30 June 2006. The amount of correction and the financial statement line items affected for the prior period are as follows:-

	2006 amount previously disclosed	Adjustment	2006 restated amount
	\$	\$	\$
Revenue	18,048,507	6,036,744	24,085,251
Surplus for the year	1,408,255	6,036,744	7,444,969
Reserves	21,492,468	(6,036,744)	15,455,724
Accumulated funds	39,088,826	6,036,744	45,125,570
Total equity and funds	60,927,730	-	60,927,730

FINANCIAL STATEMENTS

4. Revenue

An analysis of the Society's revenue for the year, is as follows:

	2007 \$	2006 \$
Donations	1,774,210	2,601,048
Interest received – other entities	183,349	161,369
Dividends received – other entities	3,097,606	3,175,157
Royalty	49,374	-
Profit on sale of equity investments	3,255,010	6,036,744
Profit on sale of property	975,498	944,195
Membership subscriptions	65,712	42,751
Fees for service - animals	5,987,278	5,163,689
Sales	1,380,964	1,185,372
Rent	571,757	601,466
Court fines and costs	107,371	188,825
Fundraising	1,736,836	1,435,964
Sundry income	2,434,563	2,548,671
	21,619,528	24,085,251

5. (Deficit)/surplus for the year

The (deficit)/surplus for the year includes the following expenses:

Charging as expense		
Depreciation of non-current assets	1,807,276	1,767,440
Bad debts written off	253,871	25,620
Employee benefit expense	14,932,930	14,024,249
Administration	5,468,880	5,747,507
Animal related	2,639,984	2,480,469
Purchase of merchandise	569,435	490,809
Repairs and maintenance	481,549	627,001
Fundraising	811,140	762,327
Occupancy	629,351	424,612
Finance cost	807,525	282,395
Other	794,656	823,437

Key Management Personnel compensation

The total compensation of the key management personnel of the Society is as follows:

Short term employee benefit	802,110	773,404
Post employment benefit	31,620	28,940
	833,730	802,344

FINANCIAL STATEMENTS

	2007 \$	2006 \$
6. Cash and cash equivalents		
Cash at bank	2,655,932	831,223
Cash on hand	42,691	42,817
	<u>2,698,623</u>	<u>874,040</u>
7. Trade and other receivables		
Trade receivables	1,500,195	861,593
Allowance for doubtful debts	(47,284)	(35,363)
	<u>1,452,911</u>	<u>826,230</u>
8. Inventories		
Finished goods	<u>730,423</u>	<u>663,129</u>
9. Other financial assets		
<u>Current</u>		
Loans to other entities	<u>912,500</u>	<u>737,055</u>
<u>Financial assets carried at amortised cost:</u>		
<u>Non-Current</u>		
Bank term deposits	1,334,751	2,570,070
Available-for-sale investments carried at fair value:		
Listed Property Trusts at market value	818,703	797,413
Shares held at market value	30,563,619	32,315,402
Unlisted Trusts and Shares at market value	1,183,523	990,504
	<u>33,900,596</u>	<u>36,673,389</u>
10. Other assets		
Prepayments	<u>16,996</u>	<u>51,496</u>

FINANCIAL STATEMENTS

11. Property, Plant and Equipment

	Capital work in progress at cost \$	Land at cost \$	Buildings at cost \$	Animal Shelters at cost \$	Motor vehicles at cost \$	Plant, furniture and equipment at cost \$	Total \$
Carrying Amount							
Balance as at 1 July 2005	11,364,942	6,633,626	4,104,570	1,469,475	2,624,693	629,411	26,826,717
Additions	1,496,214	-	-	1,526,089	4,960,868	1,603,361	9,586,532
Disposals	-	(393,700)	(100,588)	-	(3,993,779)	(7,657)	(4,495,724)
Transfers	(9,048,142)	-	-	9,048,142	-	-	-
Depreciation expense	-	-	(269,477)	(512,148)	(672,800)	(313,015)	(1,767,440)
Balance as at 1 July 2006	3,813,014	6,239,926	3,734,505	11,531,558	2,918,982	1,912,100	30,150,085
Additions	2,864,709	125,000	295,000	6,562,430	5,116,298	2,166,368	17,129,805
Disposals	-	(160,000)	(155,500)	-	(4,945,173)	(569,622)	(5,830,295)
Depreciation	-	-	(315,500)	(614,003)	(400,602)	(477,171)	(1,807,276)
Balance as at 30 June 2007	6,677,723	6,204,926	3,558,505	17,479,985	2,689,505	3,031,675	39,642,319
Net book value							
As at 30 June 2006	3,813,014	6,239,926	3,734,505	11,531,558	2,918,982	1,912,100	30,150,085
As at 30 June 2007	6,677,723	6,204,926	3,558,505	17,479,985	2,689,505	3,031,675	39,642,319

The following useful lives are used in the calculation of depreciation:

Buildings	20 years
Animal shelters	20-50 years
Motor vehicles	5 years
Plant, furniture and equipment	5 -10 years

Land and buildings, which consist predominately of investment properties, with a carrying value of \$5,633,122 have been valued during the year by Messrs MVS Valuation Services. These properties have been valued at \$15,570,000. This valuation has not been taken into account in the financial statements of the Society.

12. Trade and other payables

Trade payables	3,533,607	2,483,270
----------------	-----------	-----------

13. Provisions

<u>Current</u>		
Employee benefits	1,015,678	980,476
<u>Non-Current</u>		
Employee benefits	661,638	533,486
	<u>1,677,316</u>	<u>1,513,962</u>

FINANCIAL STATEMENTS

	Note	2007 \$	2006 \$
14. Borrowings			
<u>Unsecured</u>			
At amortised cost			
<u>Current</u>			
Bushfire appeal funds		118,141	118,141
Drought appeal funds		29,578	29,578
Broken Hill appeal funds		2,743	2,743
<u>Non-Current</u>			
Bank loan - capital works		10,071,448	4,900,000
		<u>10,221,910</u>	<u>5,050,462</u>
Disclosed in the financial statements as:			
Current borrowings		150,462	150,462
Non-current borrowings		10,071,448	4,900,000
		<u>10,221,910</u>	<u>5,050,462</u>
15. Specific Funds			
Legacy House Fund	16	-	-
RSPCA DiDi Redford Memorial Trust Fund	17	343,936	343,936
The Winifred & Maurice Neirous Trust Fund	18	2,500	2,500
		<u>346,436</u>	<u>346,436</u>
16. Legacy House Fund			
The Fund was set aside for the future development of a shelter for Legacy animals.			
Movement:			
Balance at beginning of year		-	1,221,384
Legacy fund utilised during the year		-	(1,221,384)
		<u>-</u>	<u>-</u>
Balance at end of year		-	-
The cat legacy facility has been completed during the year ended 30 June 2006 and as a result this legacy fund has been utilised.			
17. RSPCA DiDi Redford Memorial Trust Fund			
The Fund was established to pay for surgery on cruelty cases, injured strays and unwanted animals.			
Balance at end of year		<u>343,936</u>	<u>343,936</u>
This fund is currently frozen, it is proposed to review with the trustees how to best apply this money. There are allocations in the current shelter and veterinary budgets to provide the services targeted in this trust fund.			

FINANCIAL STATEMENTS

	2007 \$	2006 \$
18. The Winifred and Maurice Neirous Trust Fund		
The Fund was established to assist in the purchase of medicines for RSPCA animals from the income earned.		
Balance at end of year	2,500	2,500
Interest has not been accrued for the above specific funds as those funds are not in operation during this financial year.		
19. Accumulated Funds		
Balance at beginning of financial year	45,125,570	37,680,601
(Deficit)/Surplus for the year	(514,498)	7,444,969
Balance at end of financial year	44,611,072	45,125,570
20. Reserves		
Available-for-sale investments revaluation	18,964,027	15,455,724
Movement:		
Balance at beginning of financial year	15,455,724	19,467,394
Net valuation adjustment recognised	3,508,303	(4,011,670)
Balance at end of financial year	18,964,027	15,455,724
The available-for-sale revaluation reserve arises on the revaluation of available-for-sale financial assets. Where a revalued financial asset is sold that portion of the reserve which relates to that financial asset, and is effectively realised, is recognised in profit or loss. Where a revalued financial asset is impaired that portion of the reserve which relates to that financial asset is recognised in profit or loss.		
21. Auditors' Remuneration		
Auditing of the financial statements:		
Remuneration of the Society auditor	69,600	60,000
Remuneration of other auditors	1,773	1,013
	71,373	61,013

The auditor of the Society is Deloitte Touche Tohmatsu

FINANCIAL STATEMENTS

	2007 \$	2006 \$
22. Cash Flow Information		
(a) Reconciliation of Cash and Cash Equivalents		
Cash and cash equivalents	2,698,623	874,040
(b) Reconciliation of (deficit)/surplus for the period to net cash flows from operating activities		
(Deficit)/Surplus for the year	(514,498)	7,444,969
Depreciation	1,807,276	1,767,440
Non cash legacies	(295,000)	(1,711,000)
(Profit) on sale of investments	(3,255,010)	(6,036,744)
(Profit) on sale of non-current assets	(975,498)	(944,195)
Rent received	(571,757)	(601,466)
Interest received	(183,349)	(161,369)
Dividends received	(3,097,606)	(3,175,157)
Dividends received other than in cash	-	-
Changes in assets and liabilities		
Increase in creditors	1,050,337	705,529
Increase in provisions	163,354	62,573
Increase in receivables	(592,181)	(461,109)
Increase in inventory	(67,294)	(121,053)
Net cash outflow from operating activities	(6,531,226)	(3,231,582)
(c) Financing facilities		
Bank loan facility		
Used	10,071,448	4,900,000
Unused	4,928,552	10,100,000
	15,000,000	15,000,000
23. Commitments for expenditure		
<u>Non-cancellable operating lease commitments</u>		
Not longer than 1 year	185,415	-
Longer than 1 year and not longer than 5 years	224,569	-
	409,984	-

Leasing arrangements

Operating leases relates to the office space being rented at Homebush. The lease term is to 2009, with an option to extend for a further 3 years. The Society does not have an option to purchase the leased asset at the expiry of the lease period.

FINANCIAL STATEMENTS

24. Charitable Fundraising Act 1991

The following additional information is provided in accordance with the requirements of the above Act.

(a) Fundraising Appeals

Head Office and Branches have conducted various fundraising appeals during the year. Details of aggregate gross income and total expenses of fundraising appeals, as disclosed in these financial statements were as follows:

Gross proceeds from fundraising appeals:

Head office

Donations

Fundraising

Branches

Donations

Fundraising

Gross proceeds from fundraising appeals

Cost of fundraising appeals

Head office

Branches

Total costs of fundraising appeals

Net surplus obtained from fundraising appeals

Fundraising from cash donations and cash legacies generally conducted on an honorary basis by members of the Society supported by officers who are employed for specific inspectorial, veterinary or other necessary administrative purposes.

(b) Fundraising appeals conducted during the financial period – appeals, raffles, stalls, social functions.

(c) Statement showing how funds received were applied to charitable purposes

Net surplus from fundraising appeals

Net surplus was applied to the charitable purpose in the following manner

Funding RSPCA Inspectors

Provision of animal shelter facilities for stray, abandoned and abused animals including accommodation, food, veterinary care etc.

Veterinary clinic services

Expenditure on support services

Shortfall

	2007 \$	2006 \$
	1,496,106	2,225,251
	1,553,311	1,262,482
	278,104	375,797
	183,524	173,482
	<u>3,511,045</u>	<u>4,037,012</u>
	773,132	726,709
	38,008	35,618
	<u>811,140</u>	<u>762,327</u>
	<u>2,699,905</u>	<u>3,274,685</u>
	2,699,905	3,274,685
	3,913,040	3,908,688
	9,878,126	9,764,750
	5,899,316	5,480,074
	8,201,576	7,547,467
	<u>27,892,058</u>	<u>26,700,979</u>
	<u>25,192,153</u>	<u>23,426,294</u>

FINANCIAL STATEMENTS

	2007	2006
	\$	\$
24. Charitable Fundraising Act 1991 (continued)		
Government grant	424,000	429,000
Legacies	6,342,254	10,510,170
Investment income	6,689,791	3,336,526
Fees for service – animals	5,987,278	5,163,689
Other income – gross	5,431,414	5,511,280
	<hr/>	<hr/>
Total income from other sources	24,874,737	24,950,665

(d) Comparisons by monetary figures and percentages

Total cost of fundraising/gross income from fundraising \$811,140/\$3,511,045 (2006: \$762,327/\$4,037,012)	23.10%	18.88%
Total surplus from fundraising/gross income from fundraising \$2,699,905/\$3,511,045 (2006: \$3,274,685/\$4,037,012)	76.90%	81.12%
Total costs of services/total costs \$19,690,482/\$27,892,058 (2006: \$19,153,512/\$26,700,979)	70.60%	71.73%
Total costs of services/total income received \$19,690,482/\$24,874,373 (2006: \$19,153,512/\$24,950,665)	79.15%	76.77%

25. Superannuation Commitments

A superannuation plan administered by Westpac Financial Services has been established by the Society for the provision of benefits to employees on retirement, death or disability. Benefits provided under the plan are based on contributions for each employee. The Society contributes the maximum level of employer superannuation support. Benefits provided under the plan are based on contributions for each employee under the Superannuation Guarantee Scheme. Employees may elect to contribute various percentages of their gross income to the plan in which case the Society makes additional contributions which are related to the contributions made by the employees. As benefits provided under the plan are based on contributions for each employee, no actuarial review is required.

26. Related Party Transactions

(a) Transactions between related parties are on normal commercial terms and conditions no more favourable than those available to other parties. Mr O'Donnell and Mr A C Wozniak provide legal services to the Society. Dr Wright, at times, provides veterinary and consulting services.

(b) Identification of Related Parties

The names of directors who held office during the financial year were as follows:

Mr Andrew Christopher Wozniak, President
 Mr John Graham Hall, Vice President
 Dr Peter David Wright, Vice President
 Ms Wendy Maree Barrett, Co-Treasurer
 Mr Douglas Thomas Dean, Co-Treasurer
 Mr Paul O'Donnell, Director
 Mrs Dulcie Goldstien, Director
 Mrs Carol Edna Youdan, Director
 Mrs Neen Brown, Director

27. Contingent Liabilities

As at the date of this report, there are no significant contingent liabilities to note in these financial statements.

FINANCIAL STATEMENTS

28. Financial Instruments

Significant accounting policies

Details of the significant accounting policies and methods adopted, including the criteria for recognition, the basis of measurement and the basis on which income and expenses are recognised, in respect of each class of financial asset, financial liability and equity instrument are disclosed in note 2 to the financial statements.

(a) Interest Rate Risk management

The Society is exposed to interest rate risk, which is the risk that a financial instrument's value will fluctuate as a result of changes in market interest rates and the effective weighted average interest rates on classes of financial assets and financial liabilities, as follows:

2007	Weighted Average Effective Interest Rate %	Floating Interest Rate \$	Fixed Interest Rate Maturing			Total \$
			Within Year \$	1 to 5 Years \$	Non- interest Bearing \$	
Financial Assets						
Cash	6.00	2,655,932	-	-	42,691	2,698,623
Receivables	-	-	-	-	1,452,911	1,452,911
Other financial asset	4.75	34,813,096	-	-	-	34,813,096
Total Financial Assets	-	37,469,028	-	-	1,495,602	38,964,630
Financial Liabilities						
Payables	-	-	-	-	3,533,607	3,533,607
Provisions	-	-	-	-	1,677,316	1,677,316
Borrowings	9.15	10,071,448	-	-	150,462	10,221,910
Total Financial Liabilities	-	10,071,448	-	-	5,361,385	15,432,833

2006	Weighted Average Effective Interest Rate %	Floating Interest Rate \$	Fixed Interest Rate Maturing			Total \$
			Within Year \$	1 to 5 Years \$	Non- interest Bearing \$	
Financial Assets						
Cash	4.00	831,223	-	-	42,817	874,040
Receivables	-	-	-	-	826,230	826,230
Other financial asset	3.75	37,410,444	-	-	-	37,410,444
Total Financial Assets	-	38,241,667	-	-	869,047	39,110,714
Financial Liabilities						
Payables	-	-	-	-	2,483,270	2,483,270
Provisions	-	-	-	-	1,513,962	1,513,962
Borrowings	6.89	4,900,000	-	-	150,462	5,050,462
Total Financial Liabilities	-	4,900,000	-	-	4,147,694	9,047,694

(b) Credit Risk management

The maximum exposure to credit risk, excluding the value of any collateral or other security, at balance date to recognised financial assets is the carrying amount, net of any allowance for doubtful debts, as disclosed in the balance sheet and notes to the financial statements. The Society does not have any material risk exposure to any single debtor or group of debtors under financial instruments entered into by the Society.

(c) Fair value instruments

The net fair values of listed investments have been valued at the quoted market bid price at balance date adjusted for transaction costs expected to be incurred. For unlisted investments net fair values have been based on the quoted redemption value at balance date. For other assets and other liabilities the net fair value approximates their carrying value. No financial assets and financial liabilities are readily traded on organised markets in standardised form other than listed investments.

29. Branches

Head Office:

Yagoona

Branches:

Albury

Armidale

Bathurst

Blue Mountains

Broken Hill

Central Coast

Cooma

Dubbo

Glen Innes

Goulburn and Southern Highlands

Inverell

Kempsey

Moree

Mudgee and District

Nowra

Orange

Port Macquarie

Queanbeyan City – This branch ceased reporting to NSW Head Office in April 2007.

Tamworth

Taree

Tenterfield

Tweed Shire

Ulladulla and District

Wollongong

New South Wales Auxiliary

30. Segment Information

The Society operates in one business segment relating to the prevention of cruelty to animals.

The Society operates in New South Wales, Australia.

31. General Information

The Royal Society for the Prevention of Cruelty to Animals New South Wales, registered office and its principal place of business are as follows:

201 Rookwood Road

Yagoona NSW 2199

Tel: (02) 9770 7555

FINANCIAL STATEMENTS

Detailed Income and Expenditure Statement – Unaudited

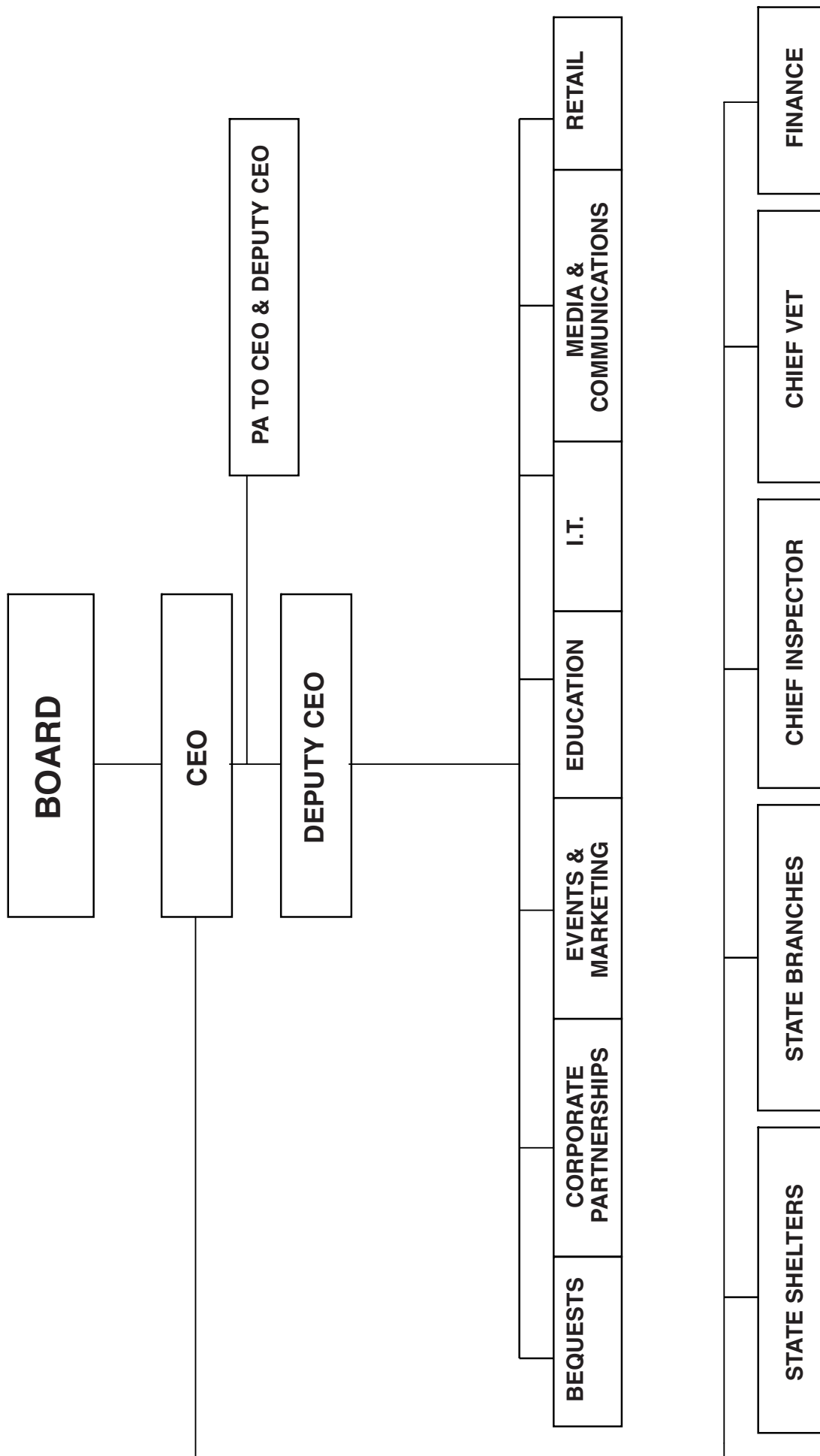
	Support Services		Shelters		Clinics		Inspectors
	2007	2006	2007	2006	2007	2006	2007
	\$	\$	\$	\$	\$	\$	\$
Income							
Donations	1,215,187	1,994,753	211,649	121,658	53,068	71,749	16,202
Fundraising – gross	1,216,585	1,254,136	37,361	-	299,365	8,346	-
Government grant	-	212,000	-	-	-	-	424,000
Investments	6,681,740	3,336,374	3,080	-	4,816	-	-
Legacies	6,291,966	10,357,872	60	-	-	-	-
Rent received	526,637	559,003	22,480	21,303	-	-	-
Fees for service – animals	28,743	30,165	2,394,100	2,206,465	3,382,725	2,786,390	6,431
Internal vet/shelters fees	-	-	40	13,337	1,497,649	2,076,102	-
Internal vet/inspectors' fees	-	-	-	-	209,809	185,681	-
Internal shelter/inspectors' fees	-	-	172,498	260,928	-	-	-
Internal shelter/clinic	-	-	26,806	75,940	1,738	-	-
Sales – other	1,031,567	862,778	23,542	16,808	1,915	696	-
Court fines and costs	23	6,340	397	34	-	70	106,951
Subscriptions	45,912	23,952	186	-	-	110	-
Surplus on disposal of non-current assets	681,257	714,011	54,199	36,739	13,356	9,560	226,685
Other	15,010	23,234	1,966,956	1,887,879	84,519	292,005	8,019
Total Income	17,734,628	19,374,619	4,913,354	4,641,092	5,548,960	5,430,709	788,288
Expenditure							
Animal related							
Food	4,691	676	95,184	135,213	479	334	12,018
Medicines	14,941	31,542	162,516	176,828	1,337,733	1,198,666	293
Veterinary expenses	19,762	4,811	392,483	361,544	92,507	9,426	68,835
Internal vet/shelters fees	-	-	1,494,797	2,076,102	2,892	13,337	-
Internal vet/inspectors' fees	-	-	-	-	-	-	209,809
Internal shelter/inspectors' fees	-	-	-	-	-	-	172,498
Internal shelter/clinic	-	-	1,738	-	26,806	75,940	-
Laboratory	-	-	-	-	88,879	100,530	853
Other	-	-	-	-	-	-	-
Employment expenses	2,538,210	2,311,835	6,935,645	6,614,837	3,366,158	3,202,164	2,088,035
Investments	-	-	-	-	-	-	-
Plant and building expenses	711,487	700,185	59,678	70,546	9,117	22,421	16,027
Occupancy costs	629,351	797,151	-	-	-	-	-
Purchases merchandise	322,749	264,570	125,122	121,598	28,003	44,235	86
Fundraising	744,315	697,343	4,591	-	24,227	29,367	-
Repairs and maintenance	157,266	143,218	245,273	393,571	45,803	53,901	2,931
Membership services	89,945	92,090	-	-	2,906	-	-
Receivable costs	78,304	5,187	14,524	-	161,043	3,903	-
Administration							
Board expenses	21,965	29,599	-	-	-	-	-
Legal	100,793	117,401	462	-	-	5,935	454,361
Communication	209,380	211,067	122,522	123,244	52,483	51,161	156,164
Insurance	43,772	254,918	91,417	95,155	26,843	27,857	2,282
Motor vehicle	217,520	213,426	177,751	198,152	37,607	29,521	437,576
Auditors' remuneration	69,600	60,000	-	-	-	-	-
Computer expenses	88,883	126,179	4,072	14,379	36,232	22,589	3,843
RSPCA Australia levy	26,793	33,541	-	-	-	-	-
Other	2,120,830	1,452,728	1,445,150	1,459,683	586,404	664,729	669,736
Total Expenditure	8,210,559	7,547,467	11,372,923	11,840,852	5,926,122	5,556,014	4,295,346
Surplus/(Deficit)	9,524,069	11,827,152	(6,459,569)	(7,199,760)	(377,162)	(125,305)	(3,507,059)

This detailed income and expenditure statement does not form part of the audited financial report and has been included for the information of members.

FINANCIAL STATEMENTS

Total	RSPCA NSW		Branches, Auxiliary		Consolidation Adjustment		RSPCA NSW Incl Branches, Auxiliary	
	2007	2006	2007	2006	2007	2006	2007	2006
\$	\$	\$	\$	\$	\$	\$	\$	\$
37,090	1,496,106	2,225,251	278,104	375,797	-	-	1,774,210	2,601,048
-	1,553,311	1,262,482	183,524	173,482	-	-	1,736,836	1,435,964
217,000	424,000	429,000	-	-	-	-	424,000	429,000
-	6,689,636	3,336,374	155	152	-	-	6,689,791	9,373,270
-	6,292,026	10,357,872	50,227	152,298	-	-	6,342,254	10,510,170
-	549,117	580,306	22,640	21,160	-	-	571,757	601,466
-	5,811,999	5,023,019	175,279	140,670	-	-	5,987,278	5,163,689
-	1,497,689	2,089,439	-	-	(1,497,689)	(2,089,439)	-	-
-	209,809	185,681	-	-	(209,809)	(185,681)	-	-
-	172,498	260,928	-	-	(172,498)	(260,928)	-	-
-	28,544	75,940	-	-	(28,544)	(75,940)	-	-
6,544	1,057,024	886,827	323,940	298,545	-	-	1,380,964	1,185,372
182,381	107,371	188,825	-	-	-	-	107,371	188,825
-	46,097	24,062	19,615	18,689	-	-	65,712	42,751
-	-	-	-	-	-	-	-	-
183,884	975,498	944,195	-	-	-	-	975,498	944,195
88,640	2,074,505	2,291,758	255,607	256,913	-	-	2,330,111	2,548,671
715,539	28,985,230	30,161,959	1,309,093	1,437,912	(1,908,540)	(2,611,988)	28,385,782	35,024,421
21,287	112,372	157,509	11,452	47,455	-	-	123,824	204,964
591	1,515,484	1,407,628	-	-	-	-	1,515,484	1,407,628
66,068	573,588	441,849	337,226	324,440	-	-	910,814	766,289
-	1,497,689	2,089,439	-	-	(1,497,689)	(2,089,439)	-	-
185,681	209,809	185,681	-	-	(209,809)	(185,681)	-	-
260,928	172,498	260,928	-	-	(172,498)	(260,928)	-	-
-	28,544	75,940	-	-	(28,544)	(75,940)	-	-
1,058	89,732	101,588	-	-	-	-	89,732	101,588
-	-	-	-	-	-	-	-	-
1,890,580	14,928,049	14,019,415	4,882	4,834	-	-	14,932,930	14,024,249
-	-	-	-	-	-	-	-	-
24,946	796,309	818,099	-	-	-	-	796,309	818,099
-	629,351	797,151	-	-	-	-	629,351	797,151
-	475,960	430,402	93,475	60,407	-	-	569,435	490,809
-	773,132	726,709	38,008	35,618	-	-	811,140	762,327
9,894	451,273	600,584	30,276	26,417	-	-	481,548	627,001
-	92,851	92,090	2,260	2,373	-	-	95,111	94,463
-	253,871	9,090	-	27,533	-	-	253,871	36,623
245	21,965	29,845	-	352	-	-	21,965	30,197
600,737	555,616	724,073	-	-	-	-	555,616	724,073
173,238	540,549	558,710	19,159	21,243	-	-	559,709	579,953
6,816	164,314	384,746	407	342	-	-	164,722	385,088
486,210	870,454	927,308	8,301	5,631	-	-	878,755	932,939
-	69,600	60,000	1,773	1,013	-	-	71,373	61,013
16,420	133,030	179,568	-	-	-	-	133,030	179,568
-	26,793	33,541	-	-	-	-	26,793	33,541
610,597	4,822,120	4,187,737	456,650	334,358	-	-	5,278,770	4,522,095
4,355,297	29,804,951	29,299,630	1,003,869	892,016	(1,908,540)	(2,611,988)	28,900,280	27,579,452
(3,639,758)	(819,721)	862,329	305,224	545,896	-	-	(514,498)	7,444,969

CORPORATE GOVERNANCE



Staff turnover

There are currently 376 staff members. Ninety staff left in the 2006-2007 financial year.



bequests | 07

Bequests were received from the following estates in 2006-2007:

HELENA MAY BATTERHAM
RACHEL ELISABETH BAYLEY
HELEN ALICE BRAGG
DAVID HADLEY BROADLEY
HERITA EMMA BURGELIS
PHIL CARTLEDGE
DOROTHY CATON
LYNNE LAVENIA CORVSY
NURTHEEN DARKE
LAURA JEAN DAWSON
PATRICIA GERTRUDE DEAL
LYNETTE ANN DIGGELMANN
IRENE BEATRICE DUNLOP
MARJORIE NORMA ELDRIDGE
ENID NEWTON ELLIS
IAN FRANCIS FERGUSON
NANCY LILLIAN FIELD
WILLIAM REGINALD FIRTH
MARTIN JOHN FOSTER
MARJORIE KATHLEEN FOSTER
ANN VERNON FOWLER-SMITH
NELLIE EMMA LOTTE GALLUS
PHYLLIS ALICE GALVIN
OWEN GANNON
FLORA CHAPMAN GLANFIELD
EDWARD ROBERT GODDARD
ELSIE MAY GREEN
MARJORY DOREEN GREEN
MYRTLE HALL
CLARICE ROSE HARDY
LYNETTE MAY HAYDEN
MARIAN MATILDA HENDERSON
GRAYCE ENA HICKEY
EILEEN EVA ADELE HIGGINBOTHAM
PHYLLIS FYFE HOUGHTON
MARY ETTA HUSS
DOROTHY MAY HUTCHINGS
LINDSAY ERNEST JOHNSON
ROSE ELLEN JONES
BEATRICE ERNESTINE LILLEY
RONALD JAMES LOUDEN
GORDON WILLIAM LOVE
LEILA AGNES MACDONALD
MARGARET COLINA MACLEOD
MARGARET ANN MAHONEY
PATRICIA COLLEEN MAJOR

BRUCE ARTHUR MATHESON
ANGELA MATIS
ESTHER EMILY MCCARTHY
LYNETTE MCENROE
VICTOR JAMES MCMILLAN
FRANCIS GENE MILLER
HADDON MUNRO
KURT NEUBAUER
RONALD NOWLAND
JOHN MERVYN O'BRIEN
PATRICIA MARY O'FLYNN
THEA GLADYS ORMISTON
ELIZABETH PALMAFY
STELLA ANN RHODES PARIS
HILDEGARD THERESE PAVITT
MURIEL LEETON PENNIMENT
MILBA RALFS
GLADYS RAE REED
NANCY AGNES RICHARDS
VALERIE LILIAN ROBERTS
FRANCES MARY ROTHE
SUSAN ELIZABETH SHAW
J A SIMPSON
ATHOL ROY SLOMAN
JOAN MARGARET SLOMAN
LILLIAN SOONG
STONER ESTATE
JOAN SHIRLEY SWEETNAM
DORIS ETHEL FLORENCE TAYLOR
JOHN DAVID THORNTHWAITE
DIRKJE ADRIANA VAN DER LEY
CATHERINE CLARE WHITE
MARGARET EDITH WHITE
NELLIE IRENE WILKINSON
MAURINE WOOD
CARLOTTA ELIOTTYOUNG
STANLEY LEON ZIMERIS

Cash distributions from the following estates:

CLIVE ARNOTT TRUST
OSCAR WILLIAM ESCHENHAGEN EDWARDS TRUST
BILL AND JOY BARRIE FOUNDATION
ELEANOR SMITH TRUST
HILDA WITTON TRUST
ELLIOTT TRUST



Love and care for all creatures great and small...

If you're an animal lover, a bequest to RSPCA NSW is one of the most satisfying ways to express it. While you may have limited capacity to donate throughout your life, a bequest is a lasting and valuable gift.

A large part of the RSPCA's success depends on the generosity of animal lovers and their bequests. These funds account for approximately 50% of RSPCA NSW's income and they are the ultimate expression of compassion for the well-being of neglected animals. Without your support, the care provided for up to 40,000 animals – by staff and volunteers throughout our shelter and branch network – would not be possible.

For more information call 02 8666 0119 or email bequest@rspcansw.org.au and quote 'CV1'.

RSPCA®

rspcansw.org.au For all creatures great and small

Our mission

Bequests provide for the ongoing care and welfare of the animals in our care. Our bequests program aims to provide the funds to help provide services to animals in need and to support the work of the RSPCA's shelters, inspectors and education programs.

Regional supporters were recognised with bequest luncheons at Tweed Heads and Port Macquarie resulting in many new bequestors joining the Animal Friends Society.

Income from bequests over the past year has been consistent with the RSPCA's annual average. While the past three years have shown extraordinary results, this was due to one extremely large bequest. Income has now reverted to the normal range.

At the end of June 2007 there were 80 estates still pending with half this number expected to bring in a further \$5.5 million. The remaining figure is unknown.

To promote our bequests program, the RSPCA has subscribed to Charitywills, an online free Will making service. We aim to promote awareness of bequest planning and philanthropic giving to a younger, educated market. As a result of our online presence

we received five bequest notifications within six months from supporters outside our donor base. This is a long term strategy which we plan to continue.

We are hopeful that with our regular donor contact visits and bequest marketing our income will grow at a steady rate.

In the latter half of 2007 the Society finally celebrated the much awaited official opening of Yagoona stage one. The invitation list consisted mainly of VIPs, Animal Friends Society members and long term supporters. Individuals who were unable to attend responded by generously donating towards the final stages of the project bringing in \$30,000 in contributions.

We extend our sincerest and belated thanks to those who have passed away and kindly remembered the RSPCA in their Will so that we may continue our core work and deliver it with integrity and compassion to those animals who suffer at the hands of ignorance and heartlessness.

Goals for 2007-2008

We plan more bequest strategies for the year to come, with a strong focus on In Memoriam giving.

Marketing

The RSPCA's marketing department aims to raise the profile of the RSPCA, generate income through multiple revenue streams and create long-term advocates for the RSPCA.

To support these goals, our team focuses on specific revenue streams, including bequests, direct marketing, events, corporate relations, public relations, media and online publications.

The RSPCA is a not for profit organisation which receives less than two percent funding from the State Government. The success of our fundraising activities is essential to the services we provide.

Direct Marketing

In the year 2006 to 2007, we obtained 8368 new donors, an increase of 2207 on last year's figures. Two donor acquisitions and three appeals, plus general donations achieved \$1,496,016. General fundraising initiatives generated \$780,179 net.

Next year we will launch Animal Advocates, an RSPCA regular giving program. We are working strongly on increasing income from this area. Currently, there are 998 Animal Advocates who donated a total of \$160,739 in 2006 to 2007 and we hope to increase this to 2000 by the end of next year.

Telemarketing

\$313,038 was raised through telemarketing.

Community Support

This year many community groups, individuals and families organised their own successful fundraising activities to support the RSPCA. In the coming year we will promote these initiatives at local events and in small and large business. This will raise income, build awareness in the corporate sector and provide a tangible way for people to be involved in the RSPCA.

Workplace giving & corporate partnerships

The reporting year saw an increase in corporate support, with workplace giving and many other fundraising initiatives adopted in workplaces.

Thank you to Sensis and Suncorp for allowing their employees to volunteer at the RSPCA and also to the employees who experienced a day at a shelter. There was also a huge increase in corporate teams at this year's RSPCA Million Paws Walk.

As a result, next year we will begin a program of corporate volunteering weeks. These will help shelter staff plan productive and non-disruptive activities, as

well as allowing our business partners to plan their volunteer days well in advance.

Our workplace animal giving scheme (WAGS) saw a huge increase of 49.8 percent to \$122,813. WAGS will be expanded over the next year to new businesses.

In the coming year we will also be taking an active approach to finding appropriate business partners. Thank you to two of our new sponsors Data Solutions Australia and Petbarn.

Next year, we will also be targeting specific businesses to develop partnerships for programs such as Safe Beds for Pets, Pets of Older People, foster care, humane education, Community Animal Welfare Schemes and event sponsorship.

To reward corporate supporters, we will begin a corporate supporter awards initiative - an annual award for businesses who provide us with cash sponsorship and donations.

Capital works

A further \$7,978 was received towards capital works.

Special events

We welcomed an events manager to the marketing team to focus on increasing revenue from and raising the profile of events as well as developing new ones.

RSPCA Million Paws Walk

This year, our major fundraising event was moved from Centennial Park to Sydney Olympic Park. We had no drop in attendance (4020 people attended) and saw increased media activity both before and after the event and the highest ever amount of corporate sponsorship.

The walk also gave us the opportunity to collect statistics such as postcodes, emails and ticket types from everyone who attended. A survey of participants showed that 60 percent of people were adults, mostly coming from the western suburbs and Hills district.

This year's RSPCA Million Paws Walk had record media coverage with 47 print articles state wide, 11 radio mentions and five TV mentions.

We also had record celebrity involvement. Thanks to: Bianca Dye, Kerri-Anne Kennerley, Tom Williams, Jamie Durie, Laura Csortan, Sammy Lucus, Shannan Ponton and Michelle Bridges and Sarah McLeod.

The walk received \$80,000 in sponsorship (cash and in-kind support). Thank you to Hills, Data Solutions

Australia, Petbarn, NSW Flyball Association, the Department of Corrective Services, Parramatta International Canine Sports Institute, NSW Mounted Police, Calm Water, Balance Water, Decorative Events, Sydney Showground, Identity PR, Aussie Pooch Mobile, Walker Party Hire, Sydney Olympic Park, ATF and Red Dawn Security for their support in this year's event.

We had a record number of 18 exhibitors at this year's walk. And Aussie Pooch Mobile was kept busy, washing 260 dogs! One hundred and twenty volunteers contributed immensely to the smooth running of the event.

In the coming year, there will be no external agency fees impacting on budgets. With a dedicated event manager overseeing events, it will become easier to find cost savings through refining elements. Events will work closely with corporate relations in securing increased sponsorship of events.

Communications

The RSPCA media unit has been restructured to include a communications manager and media officer. This will add value to many marketing initiatives, including the website and a targeted media approach for regional branches.

Media coverage

This year's RSPCA Million Paws Walk was featured on live weather crosses with Tim Bailey on Channel 10. Radio support was provided by a number of networks across the State, with special mention to Bianca Dye from NOVA FM who made public her personal

commitment to the RSPCA through her radio show, and also agreed to host the event. The walk had national exposure in New Idea through the celebrity endorsements of Jamie Durie, Tom Williams and Kerri-Anne Kennerley.

Cruelty cases have also received good coverage in the media, with unprecedented coverage of prosecutions and the work of the RSPCA's inspectorate.

Other initiatives

The team is always grateful for the assistance of inspectors and staff in providing us with media information. Recently developed media request forms streamline the process for RSPCA decision makers.

Our media database has been overhauled to ensure that all contacts are current. This overhaul includes an email or phone call of introduction to build rapport with the press.

Corporate sponsorship packs for the RSPCA Million Paws Walk and Paws for Celebration Ball have been developed to assist the marketing team in securing cash sponsorship for these events. We have also developed film packages to help the marketing team when talking to sponsors about fundraising initiatives.

The coming year promises to be an exciting one for this team. We are looking at several joint initiatives with other States. We will continue to put processes in place to ensure we are working efficiently and inclusively. And we will focus on developing online marketing initiatives including the overhaul of our current website.



The money tree at the RSPCA's Paws for Celebration Ball 2007

million paws walk | 07

Hunter region

RSPCA Hunter region celebrated their eighth RSPCA Million Paws Walk this year. It was the most successful event ever - with over 600 dogs (and one cat!). The shelter raised \$9000.

There were around 20 stalls with products and services ranging from Hill's Science Diet to pet portraits, pet-friendly resorts and doggy fashions.

Shelter dogs showed off in style in the RSPCA fashion parade, there were kids' games and dog competitions, smiling faces and wagging tails all over the place!

The money will help the shelter continue its daily work, but it will also provide a little extra for the animals.

We intend to buy some agility equipment and staff and volunteers are looking forward to teaching shelter dogs how to work the course.

The equipment will also be used on open days and at events such as next year's Million Paws Walk. It will help show people how much fun a dog can have at agility.

The Million Paws Walk was a great day out. Thanks to Provect and our other supporters!

Eliza Walker

Hunter region shelter manager

Tamworth

"Let's walk" was the call and walk we did! From a small dachshund pup called *Heidi* to a stately great Dane named *Jedda*, one hundred and sixty tails wagged together as they participated in Tamworth's Million Paws Walk.

Dogs and owners could choose from a leisurely stroll from No 1 Oval to Munro's Mill and back or the 5km walk along the levee, up Scott Road and through Lock's Lane. One enthusiastic teenager even ran the long course with his dog.

Once back at the oval, we enjoyed a BBQ lunch, live music, a dog obedience display and competitions, very capably judged by MC Kevin Anderson and Tamworth vet Greg Ireland.

Very popular were RSPCA sample bags and a primary school colouring competition. We received over 240 entries from Tamworth Public School, Oxley Public School and St Nicholas Catholic School.

Once again we received wonderful support from the



Tamworth community and local businesses. Thank you too, to the dedicated band of volunteers and their families who made this special day possible.

Inverell

There was much slobbering, sniffing, playing and panting in Inverell's Campbell Park as 74 dogs and their owners joined in RSPCA's Million Paws Walk at Inverell.

This was our third year and when records show 32 dogs walking in our first year, the success of the event is obvious in the number of paws participating. After the walk, pets and their owners enjoyed a BBQ lunch before joining in crazy challenges, dress-ups and games for prizes.

Items from the merchandise stall were very popular with 20 of our hand knitted dog jumpers sold and together with our raffle, this contributed to a very successful fundraising event.

Our adopt-a-dog section also proved popular - four dogs were re-homed to loving homes during the following week. Many of our re-homed dogs from previous years were seen walking with their new owners. That's what makes our job worthwhile!



Bathurst

Thanks to Bathurst Regional Council, RSPCA Bathurst's walk was held in the beautiful Macquarie River Bi-Centennial Park, right on the river. The walk started at the bridge then followed the river up to Denison Bridge and back.

It was a lovely day with absolutely beautiful weather. There were about 130 dogs with around 200 people. Rotary helped with the sausage sizzle and registrations and veterinary nurses from Stewart Street Vet clinic helped out with registrations and sale of merchandise.

The vet present on the day was Caitlin Anderson from Claws and Paws and there was great support from local veterinary clinics as well as local businesses. Such excellent support made it possible to hold raffles with great prizes.

Kempsey

At RSPCA Kempsey's tenth Million Paws Walk, a record crowd made it the biggest walk in the branch's history with 177 people and 140 dogs, paraded, carried or dragged (that's the owners, not the dogs) five kilometres around the streets of Kempsey.

Central Coast

A great day with a great deal of support from the local Greyhound Rescue Club!



Peggy, the three-legged ex-shelter dog helped with Hunter region's agility display at the Million Paws Walk. Her owner, Karen Pryor, found *Peggy* on the side of the highway, where she was left injured after being hit by a car. Karen took her to the RSPCA, but she was not claimed. Karen assisted with vet bills for *Peggy*, including the amputation of her leg and eventually took her home.

Bathurst



Inverell



Tamworth

Kempsey



Blue Mountains



Central Coast



Humane education

The Humane Education department helps prevent cruelty to animals by imparting humane values to school students, teachers and other members of the community.

We believe that through education, people learn about the importance of being kind to animals and, ultimately, learn to respect all living things including people and the environment.

Highlights

- Invited to present our current education model at the New Zealand National Education Conference in Auckland, hosted by Auckland's Society for the Prevention of Cruelty to Animals.
- Commencement of youth program for male offenders at Cobham Juvenile Justice Centre.
- The sale of \$5310 worth of *RSPCA Tales* books to the City of Sydney for primary schools in the local Government area.

Primary Program

Our primary education program continues to be a great success in NSW schools. We currently run specific lessons for kindergarten, Years 1 to 2, Years 3 to 4 and Years 5 to 6. All lessons are interactive, stage specific and reinforce the humane treatment of animals, well beyond basic pet care.

In particular, the *Cat Tales* lesson for Year 3 to 4 students has achieved outstanding results.

This lesson was developed in response to negative perceptions about cats in many of the schools we visited. This lesson is designed to teach students about the history of cats and their evolution. It also provides an understanding of cat behaviour.

Linking domestic cats to the big cats such as tigers, lions, jaguars, and the saber tooth tiger, has helped students to respect cats. This lesson is also designed to help lessen the incidence of kitten cruelty. By the end of this lesson, all students think cats are "cool".

Over the reporting period, we continued to deliver lectures at the University of Sydney. The lectures are aimed at third and fourth year training teachers and show how to implement humane values in every day teaching. Students learn about the RSPCA primary

program and we also provide them with useful resources.

"I feel the RSPCA education program is fresh, challenging and gives the children an insight into being better citizens in our society."

- Sandra Newell, Senior Education Lecturer, University of Sydney.

RSPCA Tales

The first series of *RSPCA Tales* books has been well received by schools and by the wider community. The City of Sydney was a major buyer, with Council purchasing 72 six-book sets for the 24 primary schools in their district. Each of these schools will receive three sets of books for kindergarten to Year 2 classes, accompanied by a teacher resource booklet containing follow-up lessons. *RSPCA Tales* helps to foster the development of empathy in young children and focuses on concepts such as kindness, respect, commitment, fairness, courage, and responsibility.

Community programs

This year we continued our program at Juniperina Justice Centre for young female offenders. This program has been a great success and we look forward to strengthening this important relationship throughout 2007-2008.

"Not only do they love the animals coming in, they can bring out their compassionate side. They can make new friends, it gives them a sense of community responsibility ..."

- Anita Hawkins education coordinator, Juniperina Justice Centre.

This year, we held trial workshops with young male offenders at Cobham Juvenile Justice Centre. The boys thoroughly enjoyed the workshops - sparking meaningful discussion around animal cruelty and the cycle of violence. We've built great rapport with the boys and have been invited back to deliver more workshops later this year.

The youth program, Youth Off The Streets invited RSPCA education officers to deliver presentations at founder, Father Chris Riley's McIntosh House. The group of teenagers loved interacting with the animals and we have been booked in to deliver more presentations next term. We also have similar bookings for 'at risk' youths at a community centre in St Marys.



Regional education

Throughout the year, our education officers travelled to Walgett, Leeton and Narranderra to provide support for Community Animal Welfare Scheme (CAWS) programs. At Tamworth, we ran a training workshop for branch volunteers and also worked with the Taree branch to deliver our program in their area. In November 2007, we will provide educational support for branches in northern NSW.

Our education department has received phenomenal support from regional branches. Education volunteers in the branches play an important role in educating children and young people across NSW. We are very lucky to have these volunteers who donate a huge amount of time to educate children in their local schools. We now have volunteers at Broken Hill, Central Coast, Glen Innes, Hunter Region, Moree,

Nowra, Orange, Sydney, Tamworth, Taree, Ulladulla, Upper Hunter and Wollongong.

Goals for 2007-2008

- Launch of secondary/youth programs beginning 2008.
- RSPCA Tales* series one to be distributed to schools through NSW Councils.
- RSPCA Tales* character shows for shopping centres during school holidays.
- Youth arts showcase.

Lauren Preston
Humane Education Manager, RSPCA NSW

Humane education statistics 2006 - 2007

Target group	Number of bookings	Audience size
Pre-school and vacation care	57	1827 students
Primary school K-6 (metro only)	69	14,013 students
Secondary school 7-12	6	1200 students
Community groups	11	967 people
EMU school visits	11	3075 students
Shelter tours	5	1850 students
University of Sydney lectures	5	342 students
Regional education	75	7009 students
Inspectors' talks	2	105 students
Specialist groups	3	52 students

We have not as yet marketed our program to secondary schools, but we have responded to individual requests with a temporary program.

Total number of people reached for the year 2006 - 2007: 30,440

Total number of people reached since 2005: 61,418



shelters | 07



Mission

RSPCA shelters aim to provide the best possible care and assistance to abandoned, surrendered, unwanted, sick or injured animals. We aim to provide people with education to help them become responsible pet owners and to support people to make an informed choice when adopting a pet.

Highlights

- Completion of stage one of Yagoona and Illawarra shelter re-development.
- The transfer, for adoption, of 1222 unclaimed dogs from council pounds not managed by the RSPCA, compared to only 92 dogs last year.
- An improvement in the care of animals and an increase in adoptions.

This year, adoptions have increased due to the construction of our new shelters and through the RSPCA's management of ten Council pounds.

Also contributing to the increase was an expansion of foster care. We now have a full-time foster care co-ordinator at Yagoona and the foster care program will be extended to regional shelters and branches in 2007-2008.

This program is responsible for saving 723 cats from euthanasia at Yagoona shelter alone. Previously, only staff or RSPCA members were able to foster animals but fostering has now been extended to the general public. Two recruitment weekends have been held for foster carers, with up to 20 people attending each session.

Weekly transfers of animals from regional shelters to metropolitan shelters has also contributed to an increase in re-homing and a decrease in euthanasia.

In RSPCA shelters, animals are euthanased for the following reasons:

- Dangerous dog order
- Aggressive to people
- Aggressive to other animals
- Failed behaviour assessment
- Jumps fences 1.5 metres or over
- Restricted breed
- No room
- Aged
- Sick or Injured

This year, the number of dogs euthanased for lack of space has halved.

Transfers are directly responsible for saving 1054 dogs and 225 cats. Of these, 653 were puppies, 176 were kittens, 49 were adult cats and 401 were adult dogs. Our ambulances are purpose-built for these transfers. They are air conditioned with specially designed cages. This year, the number of dogs euthanased for reasons of lack of space has decreased by 50 percent. With weekly transfers we hope to reduce this number to zero.

An increase in adoptions can also be attributed to Animals Online, Adoptapet, the Road Home program, Save our Seniors and the Twilight Adoptions program which has extended adoption hours on Saturdays, the busiest day at Yagoona shelter.

All adult dogs undergo behaviour assessment so that only safe and appropriate animals are available for adoption. This year, 5710 dogs and 4538 cats found good homes, and only 3.3 percent (186) of these were returned. In previous years around 20 percent of animals were returned to the shelter. As a result, 798 more dogs and 96 more cats found homes than last year.

Rehabilitation programs have also been successful in giving animals with minor behaviour problems a chance of finding a new home.

There was a 13 percent increase in the number of lost dogs reunited with their owners from 1998 to 2006. This increase is directly related to compulsory microchipping under the Companion Animals Act.

Environmental enrichment

While at our shelters, animals benefited from programs which enhance their lives in care, such as environmental enrichment programs.

Environmental enrichment is particularly important for shelter animals. It provides stimulating activities which prevent boredom and decrease the incidence of stereotypic behaviour which can result from prolonged stays in shelters, particularly for cruelty cases.

This year, our shelters continued to provide services to the community such as:

Safe Beds for Pets - caring for the animal victims of domestic violence;

Pets of Older People (POOPS) which cares for the pets of elderly people or those needing hospitalisation;

Emergency boarding - for people affected by floods, bushfires or for people who need to go to hospital urgently.

RSPCA Hunter memorial garden,
courtesy Newcastle Permanent



Blue Mountains shelter

Eight hundred and seventy dogs, 381 cats and 95 other animals cared for, with 34 percent of dogs and 61 percent of cats adopted and 69 percent of stray dogs re-united with their owners. No animals were euthanased due to lack of shelter space.

Four new dog exercise yards and three livestock yards were built over the past year.

Renovation of the adoption and administration centre providing a professional work area for shelter staff.

One hundred and twenty-three animals were accepted at Blue Mountains shelter from the central west.

Central Coast shelter

One thousand two hundred and eighty six dogs, 607 cats and 220 other animals cared for. Forty three percent of dogs and 41 per cent of cats re-homed.

Five hundred and sixty eight stray dogs were cared for under an agreement with Gosford City Council which sees unclaimed pound dogs transferred to the RSPCA.

Four new dog exercise yards with sail shades and paddling pools have doubled the size of dog exercise areas.

New meeting areas for clients to socialise with the dogs they might adopt.

New areas for behaviour assessments and for volunteers to spend quality time with dogs.

Upgrading of shelter entry and service roads and new storage facility, generously donated by Central Coast branch.

Orange shelter

Orange shelter is one of the smallest shelters, but cares for the third highest number of animals in the State. This year, dedicated staff cared for 1929 dogs, 789 cats and 126 other animals. Of these 66 percent of dogs and 44 percent of cats were re-homed - directly attributable to the animal transfer program.

The shelter provided new exercise yards, new cat enclosures, insulated their cattery and opened their new adoption, administration and staff amenities building.

Orange also has a busy and extensive education program, visiting thousands of primary school students and giving education talks at local hospitals.

Illawarra

RSPCA Illawarra cared for 1288 dogs, 1289 cats and 246 miscellaneous animals.

Stage one of the new \$11.5 million shelter, including new kennels, catteries, aviary and adoption centre was completed this year at a cost of \$6 million.

The development includes administration and animal reception, adoption interview rooms, quiet room, ambulance bay, industrial laundry, vet assessment room, dog and cat isolation rooms, storage, short term animal holding, staff amenities and training room.

There is also an adoption cattery, complete with cat lounge, cat assessment room, maternity ward and stray cattery. Each cattery has custom built, stainless steel cages for easy cleaning and disease control.

Dogs have 60 purpose built kennels with high pressure water-saving hosing, climate controlled, heated kennel floors and covered, all weather exercise yards. The puppies and small dogs have their own pavilion with panoramic, five-star views.

Hunter

Cared for 4322 dogs, 3066 cats and 387 other animals, the second highest number of animals in the State.

Hunter region shelter is the impounding agent for three local councils and this accounts for 73 percent of incoming dogs and 78 percent of cats. Forty five percent of stray dogs were returned to their owners and 52 percent of the total number of incoming dogs were re-homed.

Construction of memorial gardens, made possible by a grant from Newcastle Permanent Building Society.

Second livestock shelter for the large number of inspectors' cases housed at the shelter.

"Friendship Agreement" signed with Omiya Animal College in Japan, to host an annual student tour group.

"Cat caboodle" donated by RSPCA NSW Auxiliary to house more kittens during breeding season.

Yagoona

The shelter cared for 6484 dogs, 6494 cats and 1704 other animals. Of the 6484 dogs, 825 were transferred from regional shelters. No dogs were euthanased due to lack of room.

Yagoona shelter re-homed 4935 animals.

RSPCA NSW President Andrew Wozniak presents Lorraine Johnson with honorary life membership



Stage one of the shelter's new kennels, cattery, feed room, store rooms, stables, poultry and flight aviary were completed at a cost of \$6 million.

This stage includes the construction of 105 climate controlled, heated kennels with water saving, high pressure hose systems, a climate controlled stray cattery, flight aviaries, a poultry aviary with duck pond, stables with two veterinary treatment areas, industrial laundry and a food preparation area which can feed up to 700 dogs each day.

A re-structure of the shelter team now gives the opportunity for advancement and for the creation of new positions.

The RSPCA continues to work with Government to promote animal welfare across the State.

RSPCA NSW was represented in all workgroups involved with the five year review of the Companion Animal Act.

Continual liaison with the Department of Primary Industries to ensure best practice in our shelters.

RSPCA staff are represented on Animal Care and Ethics Committees to remove, reduce and replace the use of animals in research.

Thank you to all shelter staff for their dedication, perseverance and compassion while working in daily extreme weather conditions, floods, bushfires, shelter re-building, and relocations without compromising the quality of care for RSPCA animals.

Goals for 2007-2008

- Complete our current capital works.
- Continue staff training.
- Further develop programs such as environmental enrichment, behaviour assessment and rehabilitation as well as foster care and animal transfer programs.

Sue Patchett
State manager NSW shelters

Branches

RSPCA branches aim to support and extend the work of our shelters to regional areas. They depend on a small core of hard working volunteers to continue to raise funds for and awareness about the work of the RSPCA.

This year, most branches held a Million Paws Walk, ran desexing schemes and assisted with Community Animal Welfare Schemes (CAWS). Branches also assisted in education initiatives and ran stalls at local shows. They hosted visits from the Education Mobile Unit (EMU), contributed to event catering, held garage sales and developed local Animal Carers' Schemes.

Queanbeyan Branch left RSPCA NSW this year to amalgamate with RSPCA ACT. This was a unanimous decision by branch members in order to progress animal welfare in the local area. The branch will be able to benefit from the use of the RSPCA ACT animal ambulance. And volunteers will benefit from being able to visit the Canberra shelter.

In 2006, the RSPCA Board decided to acknowledge outstanding branch members by awarding them honorary life membership and a ten-year lapel pin.

Awards were made to Val Hampson (Central Coast branch), Ann Dewson (Wollongong), Carol and John Youdan and Sandy Brooks, Marie Grofos and Kevin Sharpe (Taree), Neen Brown (Armidale), Lorraine Johnson (Broken Hill), Lesley Haggart (Tweed Heads), Norma Ovenden (Tenterfield), Gwen Crichton (Wollongong), Decie Cullen (NSW Auxiliary), Merran Bertolin and Rhonda Morgan (Cooma), Hazel Rooney (Inverell), Maureen Johnson and Terri Monteath (Port Macquarie) and Lorraine Bamford (Ulladulla).

Certificates of appreciation to non-member volunteers were awarded to Bluey Hampson (Central Coast) and Di Lehman, Graciela Campos and Reg Starr from the Wollongong branch.

Don Robinson
Manager branches and properties

Desexing programs 2006-2007

1200 animals were desexed through the Community Animal Welfare Scheme (CAWS).

572 animals were desexed by the RSPCA NSW Auxiliary's subsidised desexing program. They included 74 male dogs, 133 female dogs, 108 male cats and 257 female cats.

Regional desexing programs were held at Orange, Wollongong, Central Coast and Tweed Heads.

Foster care

Foster care is an extremely important part of the RSPCA's work. Some animals have special needs or are sick or injured or are simply too young to stay in the shelter. Our foster carers give these animals a chance they would not otherwise have.

Foster carers are special people who give young animals a sure start in life, allowing them to move on to suitable, life-long homes.

We are now looking for volunteers to join our foster care team.

Anyone over the age of 18 can apply to become an RSPCA foster carer. You will need:

A secure environment, time to spend with your foster animal, reliable transport and written permission from a landlord if renting.

It's important to remember that caring for any animal means that an attachment is usually formed. Having to give an animal back can be difficult and emotional. Be sure to discuss this aspect of fostering with your family before making the commitment to care for an animal. Other aspects which need to be considered include any health issues or allergies your family may have. If you currently have pets, it's essential they be vaccinated and wormed not only for their protection but for the safety of the little one coming into your care.

For more information on becoming an RSPCA foster carer, please phone (02) 9770 7562 or via our email address: fostercare@rspcansw.org.au.

Just purr-fect

The Legacy Cattery at Somersby celebrated its first birthday in June this year.

Staff and volunteers helped the cats celebrate with special treats of prawn patty cakes.

The last year has also seen the addition of new staff

who are in the process of organising new play facilities for the cats which will add to their enjoyment of the outdoor areas.

There are also plans for a memorial garden which is to be created entirely out of donated plants and materials and put together by staff and volunteers. It will provide a fitting tribute to cats who have shared their lives with us at the cattery.

Northern NSW

Over the past 12 months, the RSPCA has continued to be involved in community education in northern NSW. In conjunction with Byron Shire Council, RSPCA co-sponsored a five-day visit by RSPCA QLD's Education Mobile Unit (EMU). Approximately 900 children from Mullumbimby, Bangalow, Adventist, Coorabell and The Pocket primary schools took part in lessons.

EMU was also open to the public at a Pet Awareness day at Mullumbimby, where a further 200 to 300 people visited the unit. A joint initiative between RSPCA and Byron Shire Council offered reduced price desexing to low-income families. As a direct result of this successful initiative, Byron Shire Council has now committed ongoing funding for an annual desexing program.

Coffs Harbour shelter and RSPCA facilities at Tweed Heads and Port Macquarie continue to serve their respective communities. In March 2007, Coffs Harbour RSPCA sponsored a five day EMU visit to local primary schools and an open day at the shelter. This visit was made possible through donations received locally through the IGA community benefit scheme.

Tradewinds continues to be profitable - consolidating its existing customer base, while also attracting new customers.

Leonie Gorman
Regional co-ordinator northern NSW

Port Macquarie

Shelters snapshot

Over the past five years RSPCA NSW has seen:

- An increase in the number of animals cared for, from 31,125 in 2002 to 42,128 in 2007.
- An increase in the number of dogs cared for, from 18,625 in 2001 to 21,807 in 2007.
- An increase in the number of cats cared for, from 11,509 in 2001 to 15,867 in 2007.
- A decrease in the number of dogs euthanased from 42 percent in 2001 to 37.6 percent in 2007. Of these, 60 percent were euthanased for behaviour reasons, 31.5 percent for veterinary reasons.
- A decrease in the euthanasia of cats - 2978 fewer cats and kittens were euthanased in 2007 compared to 1998.

There was a substantial increase in the number of animals received at the centre, with a 50 percent increase in the number of dogs. Surrendered dogs continue to account for most of this increase.

This year also saw a 65 percent increase in the number of cats received. The percentage of surrendered cats dropped by 15 percent although this was offset by a similar increase in the numbers of stray cats.

Surrender rates for smaller pets such as rabbits and guinea pigs increased by 100 percent.

These figures indicate we need to continue to focus our community education efforts on the message that pets are for life. We also need to emphasise the importance of compulsory microchipping and appropriate adoptions.

To help our re-homing efforts, we continue weekly Animals Online updates and publicity in local print media. We also regularly transfer animals to larger shelters such as Hunter and Yagoona to overcome space issues at this small centre.

Additional re-homing strategies include the recently introduced *Road Home* program which was initiated in Port Macquarie and will be shared by branches and shelters throughout the State.

This program is based on the successful RSPCA Queensland model and takes animals to community events to raise awareness about the RSPCA and promote animal adoptions (adoptions are completed after an event - not at an event).

Port Macquarie

Port Macquarie RSPCA branch assists in the re-homing process by promoting animals through their support shop and by running regular features in the local print media. They also provide funding for approved veterinary work, which falls outside the shelter budget, allowing us to help more animals to live healthy lives.

Education continues to be a strong priority for both the adoption centre and the local branch with hundreds of school children visiting us this year. We combine shelter visits with an educational presentation at our purpose-designed education centre.

Total animals cared for by RSPCA NSW

	2004/2005	% of total	2005/2006	% of total	2006/2007	% of total
Dogs admitted	20,814		22,480		22,861	
Reclaimed	4472	21.5%	7598	33.8%	5062	22.1%
Adopted	5865	28.2%	4912	21.9%	5710	25.0%
Euthanased for veterinary reasons	2506	12.0%	2463	11.0%	2707	11.8%
Euthanased for shelter reasons	4772	22.9%	5574	24.8%	5890	25.8%
Cats admitted	14,247		14,745		16,091	
Reclaimed	260	1.8%	308	2.1%	298	1.9%
Adopted	4042	28.4%	4442	30.1%	4538	28.2%
Euthanased for veterinary reasons	4439	31.2%	4956	33.6%	5101	31.7%
Euthanased for shelter reasons	3775	26.5%	4432	30.1%	4672	29.0%
Other admittance	3989		3321		3196	
Total	39,050		40,546		42,148	

The figures for admitted animals included transfers from RSPCA managed shelters, external organisations and internal transfers. A 50 percent reduction in the number of dogs euthanased due to lack of shelter space - this was due to the animal transfer program from regional shelters.

An increase from 92 to 1222 dog transferred for adoption from non-managed council pounds to RSPCA shelters.

Dog adoptions increased from 4912 to 5710, cat adoptions increased from 4442 to 4538.

An increase from 14,745 to 16,091 cats cared for by the RSPCA NSW.

The adoption centre workforce, staff and volunteers, remains stable.

During the reporting year, the adoption centre was accredited under Port Macquarie-Hastings Council's *Customer Care Program* as a quality customer service provider. In June 2007, the centre won second place in the Professional/Trade Services category at the inaugural Customer Care Service Excellence Awards.

A total of 134 local business participated in the awards making this an outstanding achievement by a wonderful team of dedicated people at Port Macquarie Adoption Centre.

Susan Hill
Area Manager, Port Macquarie

The environment

The RSPCA is committed to improving its environmental performance. The rebuilding of Yagoona shelter and the new Hunter and Illawarra region shelters have significantly contributed to this.

New hosing systems at Yagoona, Hunter and Illawarra have cut water usage by 80 percent, using only eight litres a minute.

Yagoona and Unanderra have:

❑ "Letter box" drainage combined with bucket trap floor wastes means cleaner waste water entering the sewerage system.

❑ Radiant heat in the kennels warms the animal rather than the surrounding air. Kennel floor temperature is controlled by gas operated hot water which requires very little energy to maintain optimal temperature.

❑ The stray cattery uses evaporative cooling as well as sub-floor heating in winter.

❑ The combined roof area of the new buildings is large enough to harvest stormwater throughout the Yagoona site, with thirteen 5000 litre tanks providing 65,000 litres of water storage.

This provides water for green areas which form the visual and sound barriers throughout the kennel area. Drip irrigation systems with rain sensors are used to water these green areas.

❑ At Unanderra, there are four 25,000 litre tanks giving a total of 100,000 litres of water storage, used to water green areas.

At Yagoona in stage one of the development, energy use is minimised by the installation of instantaneous natural gas hot water systems, which provide hot water only as required. At Unanderra, gas boosted solar hot water has been installed.





Loki, adopted from RSPCA Dubbo by Toni O'Bryan, the RSPCA's Council liaison co-ordinator. *Loki* would have been euthanased if the RSPCA was not there for pound dogs.

Pounds

This last year has again been another busy year for RSPCA staff contracted to provide pound services.

Dogs

Impounded by Council rangers	4823
Impounded by private citizens	2835
Dumped or left in night cages	1410
Surrendered to Council	273
Stray - dead on arrival	9
Returned to owners	3986
Transferred to RSPCA NSW	5220

Cats

Cats impounded by Council rangers	766
Impounded by private citizens	1032
Dumped or left in night cages	172
Surrendered to Council	39
Stray - dead on arrival	4
Returned to owners	68
Transferred to RSPCA NSW	1398

The RSPCA manages ten pounds across the State - Blue Mountains, Coffs Harbour, Gosford, Hastings, Lake Macquarie, Maitland, Newcastle and Orange. RSPCA adoption services operate with Council co-operation at Dubbo and Nowra.

But this year there has been a debate about whether the RSPCA should run Council pounds because of the increased cost of doing so. Currently, the RSPCA takes ownership of all unclaimed animals and assesses their suitability for re-homing.

Section 64(5) of the Companion Animals Act says Councils have a duty to consider alternatives to euthanasia and if practical, should adopt these alternatives.

One argument is that Councils should pay the RSPCA to take unclaimed animals. While some Councils are progressive and try to re-home animals, a large number of Council facilities are not suitable for this purpose, so many animals are euthanased.

Many are prepared to offer animals to welfare agencies, but they are not legally required to pay the agencies to care for them.

This year 5220 unclaimed pound dogs were received by the RSPCA. Around 50 to 60 percent of these were re-homed, saving the lives of between 2610 and 3132 dogs.

If it were not for the RSPCA's involvement in Council pounds, these dogs would have been euthanased and this strongly supports our continuing involvement.

Another significant benefit of the RSPCA's involvement in pounds, is that it allows us to offer a larger variety of animals for adoption.

Dubbo

The RSPCA has made a significant impact on the euthanasia rates of impounded animals in Dubbo. Two hundred and 21 impounded dogs were re-homed and a further 264 were transferred to other RSPCA shelters, where they have a better chance of re-homing. As well, 91 cats were re-homed and 32 transferred.

Nowra

At Nowra, 176 dogs were re-homed, and 66 transferred to other RSPCA shelters, while 141 cats were re-homed and 31 transferred.

We hope our new Illawarra shelter at Unanderra may allow for further transfers, therefore increasing our re-homing potential. And it will potentially allow us to manage another two Council pounds.

Thank you to all staff working in pound operations. It can be a thankless task, but it makes a great difference to the animals in our care. Thank you especially to the members of RSPCA Dubbo, Orange, Port Macquarie and Nowra branches for the support they give to the shelter and pound facilities in their areas.

Toni O'Bryan
RSPCA Council liaison co-ordinator

