

## Stage 1

Name:



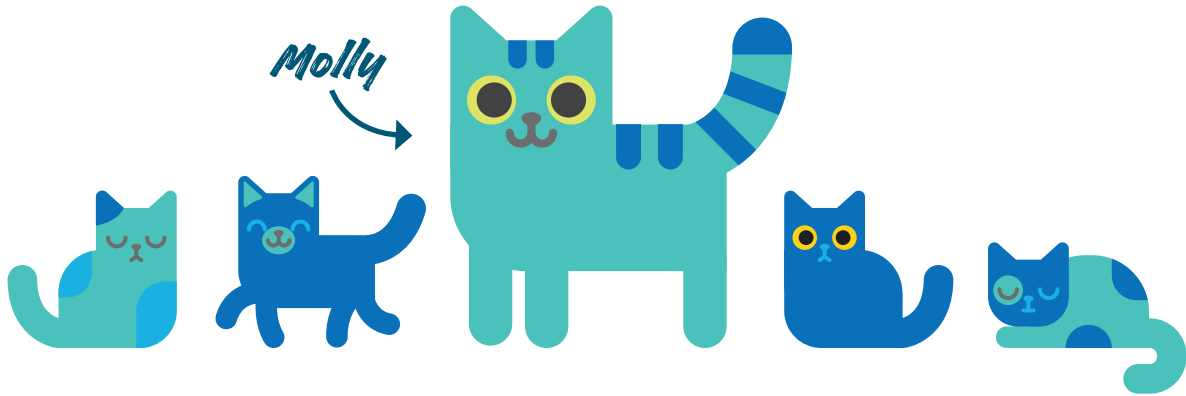
**TenLives**

# Contents

|   |          |
|---|----------|
| <b>English</b>  | <b>1</b> |
| NSW Curriculum: Plans, composes and reviews a small range of simple texts for a variety of purposes on familiar topics for known readers and viewers (EN1-2A)                         |          |
| <b>Maths</b>  | <b>2</b> |
| Australian Curriculum: Represent and solve simple additions and subtraction problems using a range of strategies including counting on, partitioning and rearranging parts (ACMNA015) |          |
| NSW Curriculum: uses number bonds and the relationship between addition and subtraction to solve problems involving partitioning (MA1-CSQ-01)   |          |
| <b>Science</b>  | <b>7</b> |
| Australian Curriculum: Living things have a variety of external features (ACSSU017)   |          |
| NSW Curriculum: Explores the characteristics, needs and uses of living things (STe-3LW-ST)  |          |
| <b>Creative Arts</b>  | <b>8</b> |
| NSW Curriculum: Makes artworks in a particular way about experiences of real and imaginary things (VAS1.1)  |          |
| <b>Certificate</b>  | <b>9</b> |



# Counting kittens



Write how many kittens Molly has: \_\_\_\_\_

 +  = 

  2   kittens +   1   kitten =   3   kittens

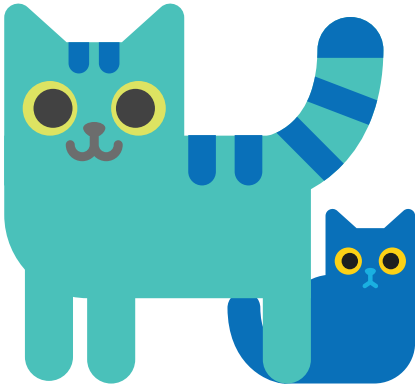


Write the number of kittens on each side of Molly, then add them together.

**\_\_\_\_\_ kitten + \_\_\_\_\_ kittens = \_\_\_\_\_ kittens**

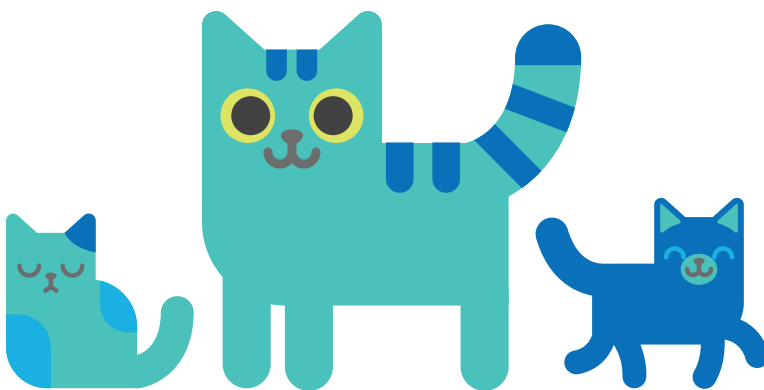
How many cats and kittens can you count on this page? \_\_\_\_\_

# Draw a circle around the correct answer



Is the kitten **in front** of or **behind** the cat?

Is there 1 kitten **on top** of or **under** the cat?



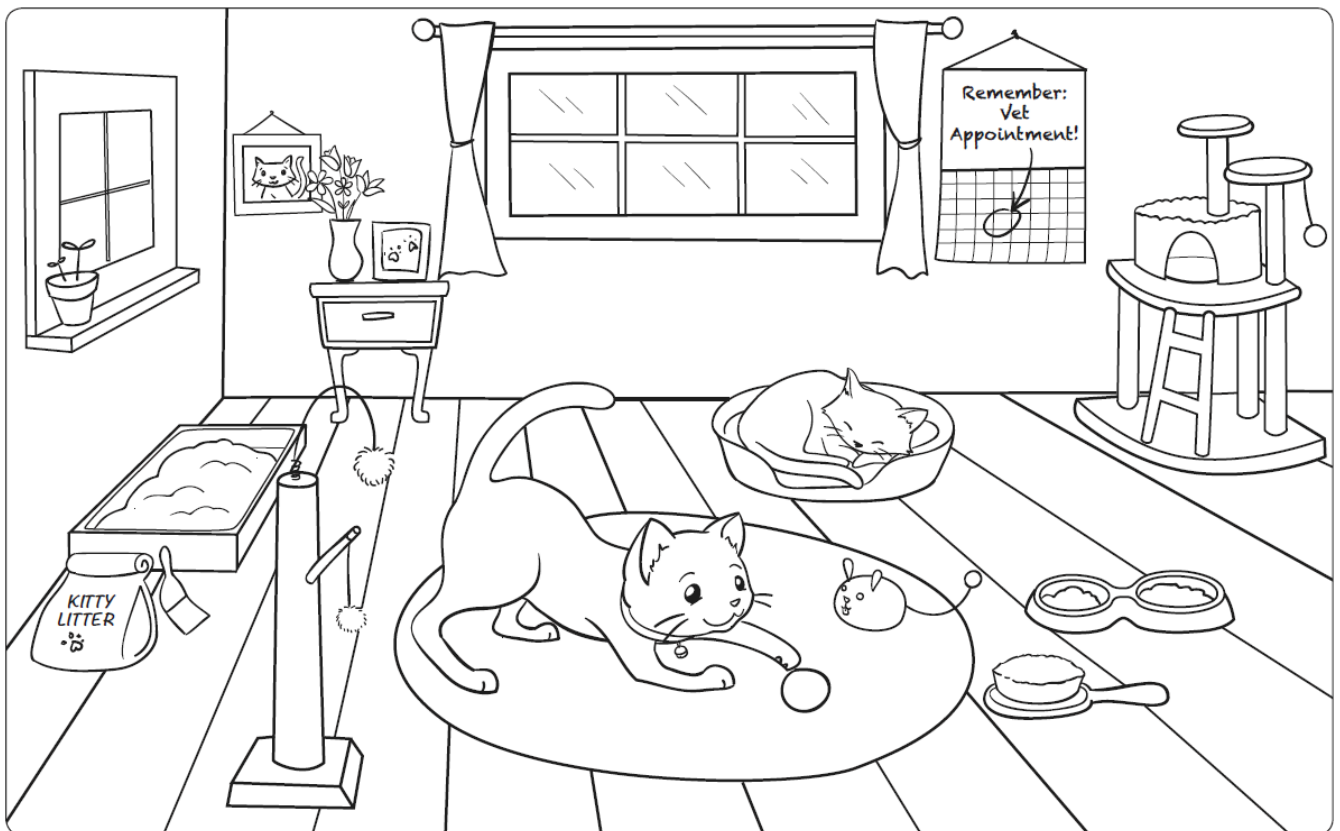
Is the cat to the **left**, in the **middle** or to the **right** of the kittens?

# Keeping Cats Safe Indoors

Colour in the picture below.

**EXTENSION!**

Draw a red star next to all the things that are making the cats happy.



# Why are cats so good at adapting? What makes them special?

Cats have special features that make them good hunters. All cats, including wild cats, lions and tigers have similar features, our pet cats are just smaller.

## Eyes

- 🐾 Split pupils
- 🐾 Can see in dim light
- 🐾 Three eyelids

## Whiskers

- 🐾 Sensitive
- 🐾 Help them feel things

## Tail

- 🐾 Balance
- 🐾 Show how cats are feeling

## Ears

- 🐾 Can move together or one at a time
- 🐾 Hearing is a cat's strongest sense

## Mouth

- 🐾 Strong, sharp teeth
- 🐾 Barbs on tongue
- 🐾 Jaws only move up and down

## Claws

- 🐾 Used for balancing, digging, self-defence and catching food

## Paws

- 🐾 Strong and soft
- 🐾 Sensitive and help them feel things







**Write the different features of a cat in the correct boxes below.**

**EXTENSION!** In the space below, write what the features are used for.

- nose
- eyes
- teeth
- ears
- paw
- fur
- whiskers
- tail



# Draw a close-up picture of the different cat features

eyes

ears

teeth

paw

fur

nose

# CONGRATULATIONS!



You've completed all the activities  
in your Cat Booklet!

This certificate of achievement  
is presented to:

---