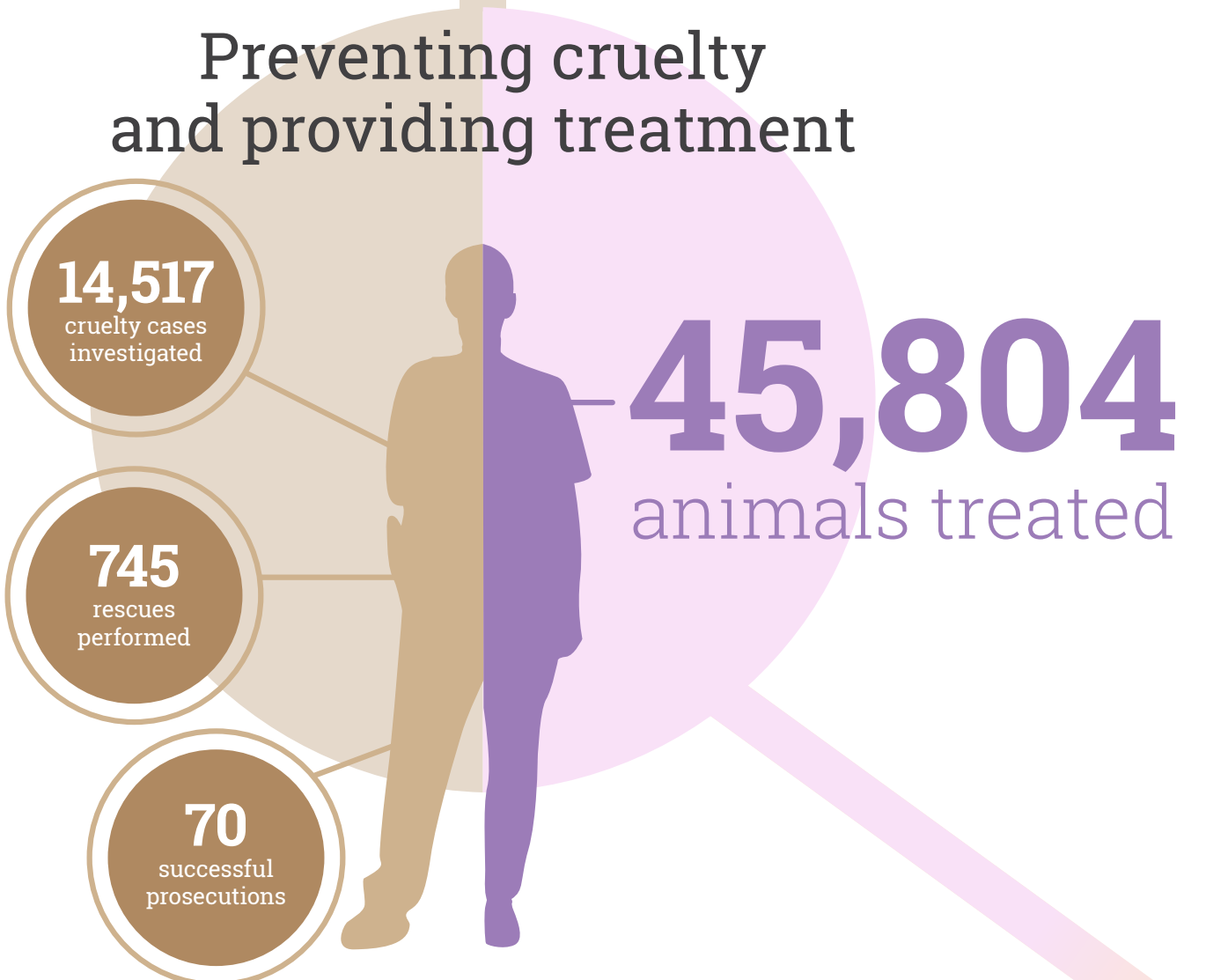
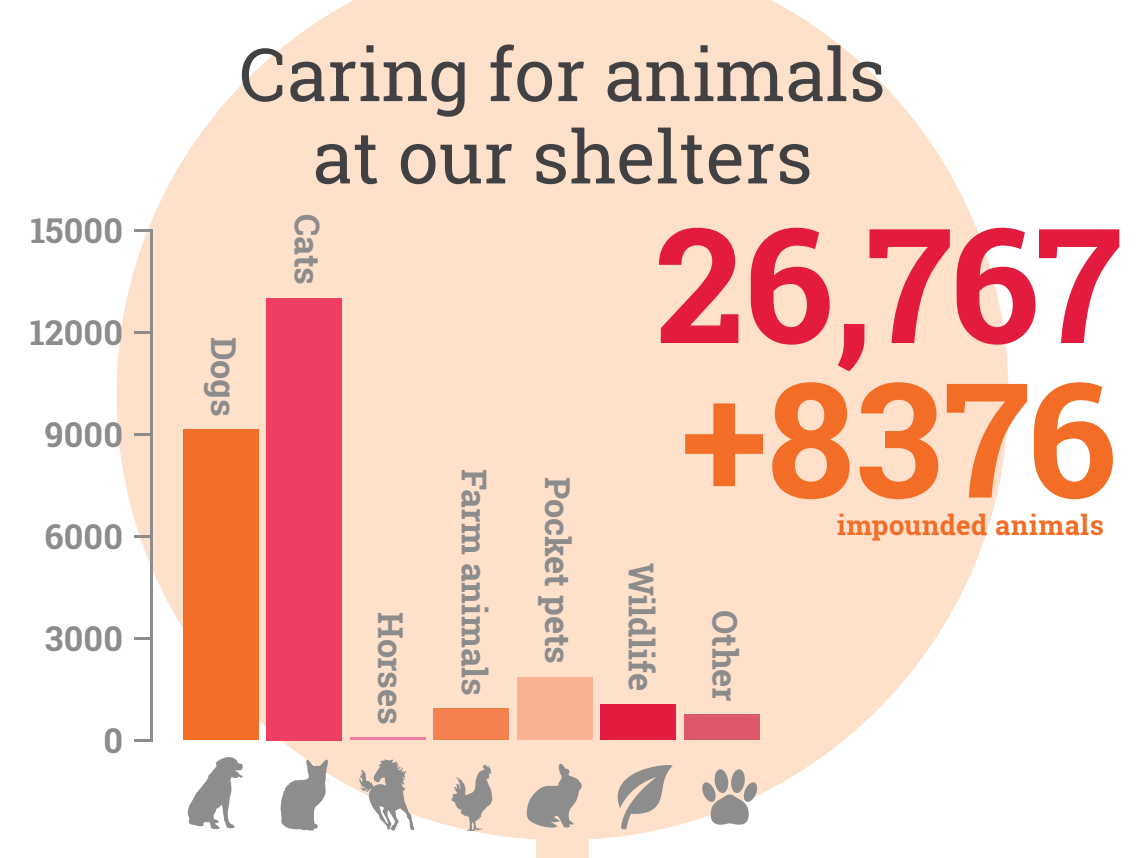
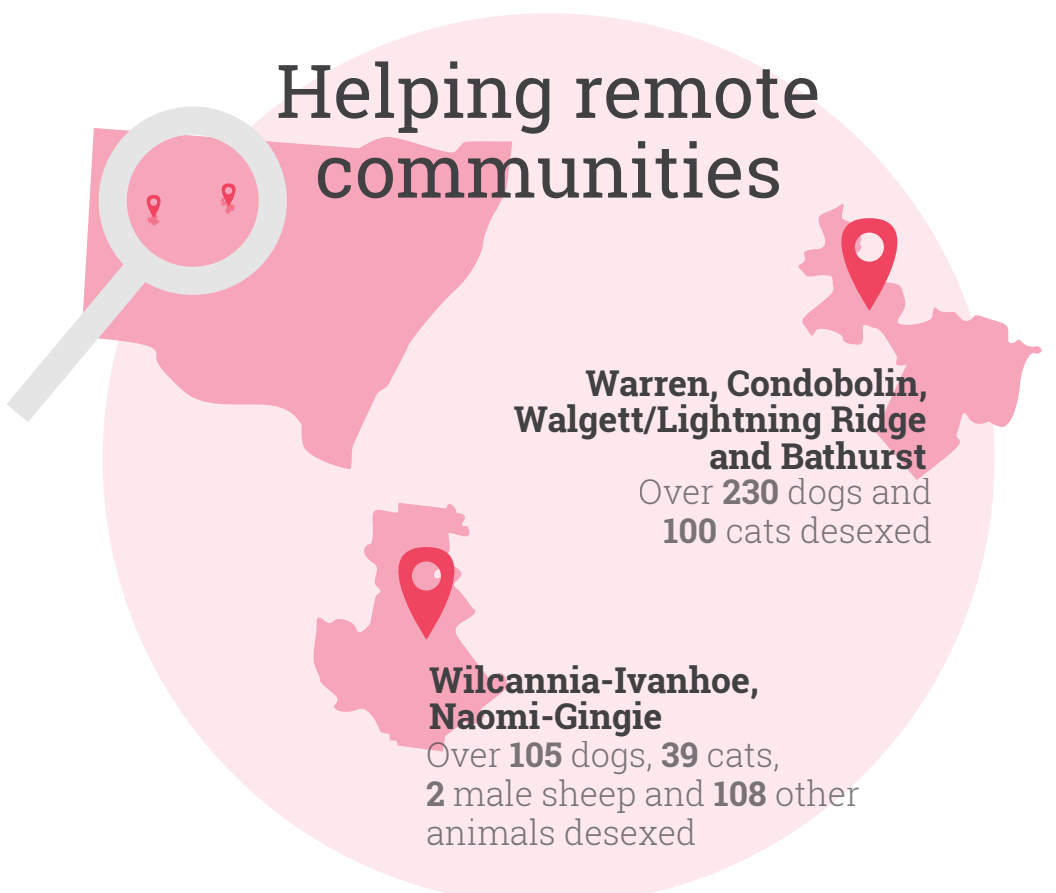
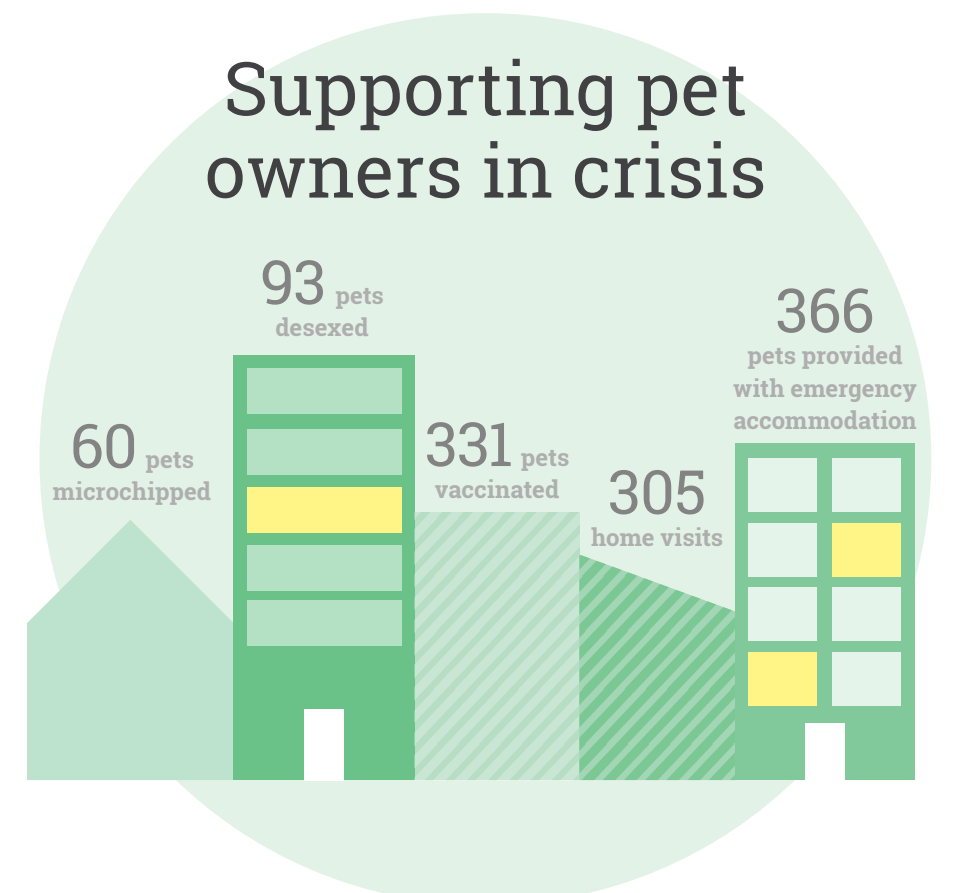
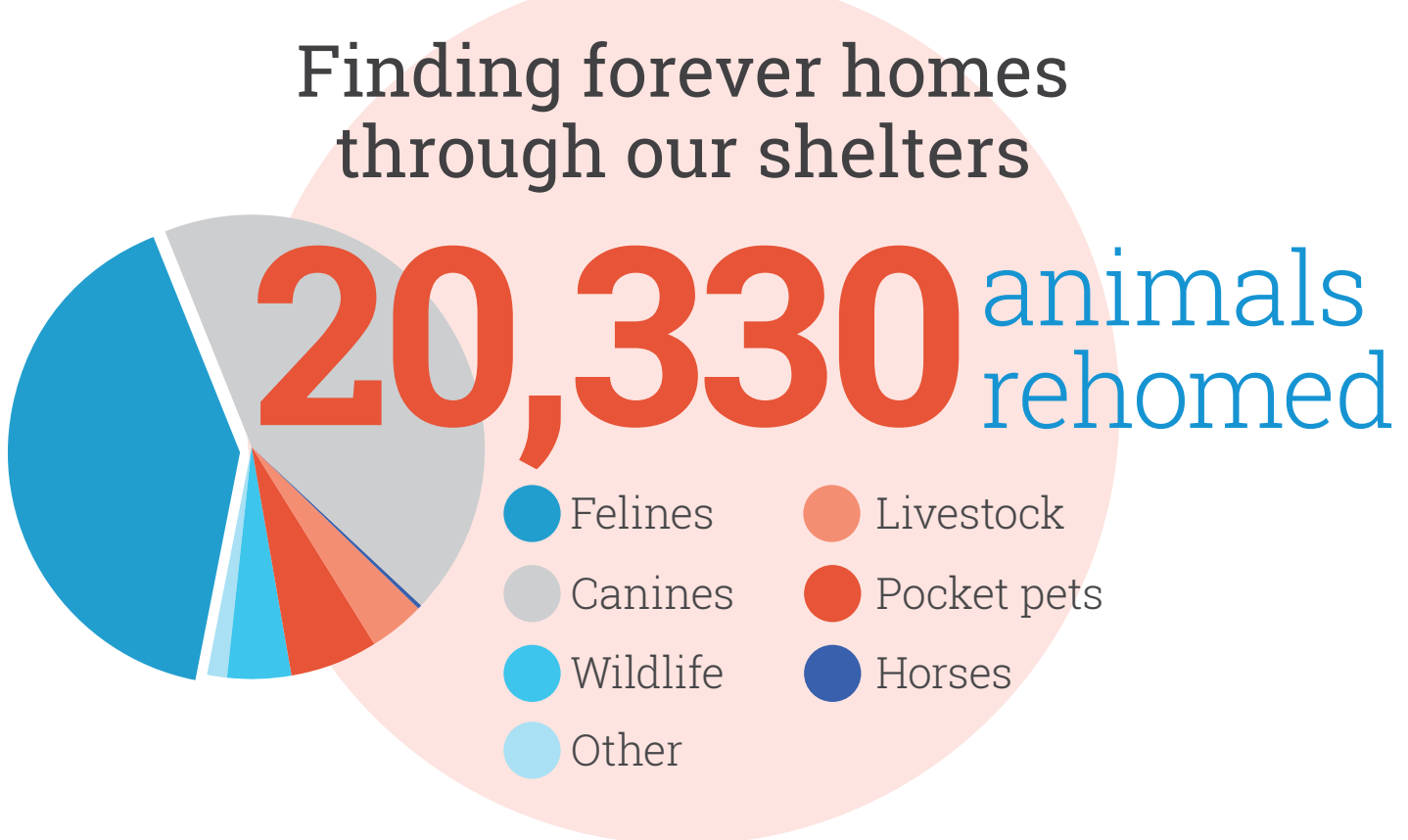
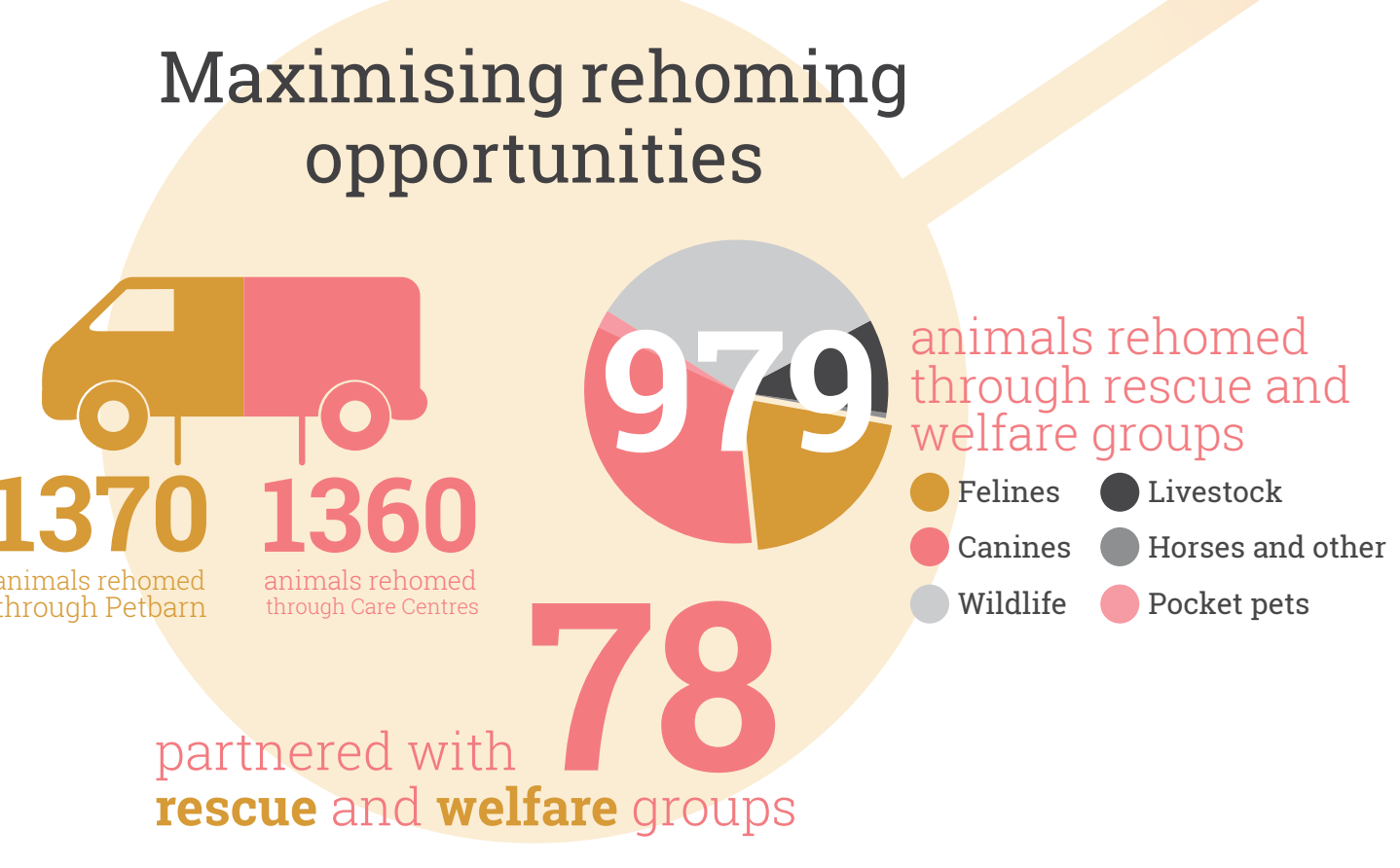
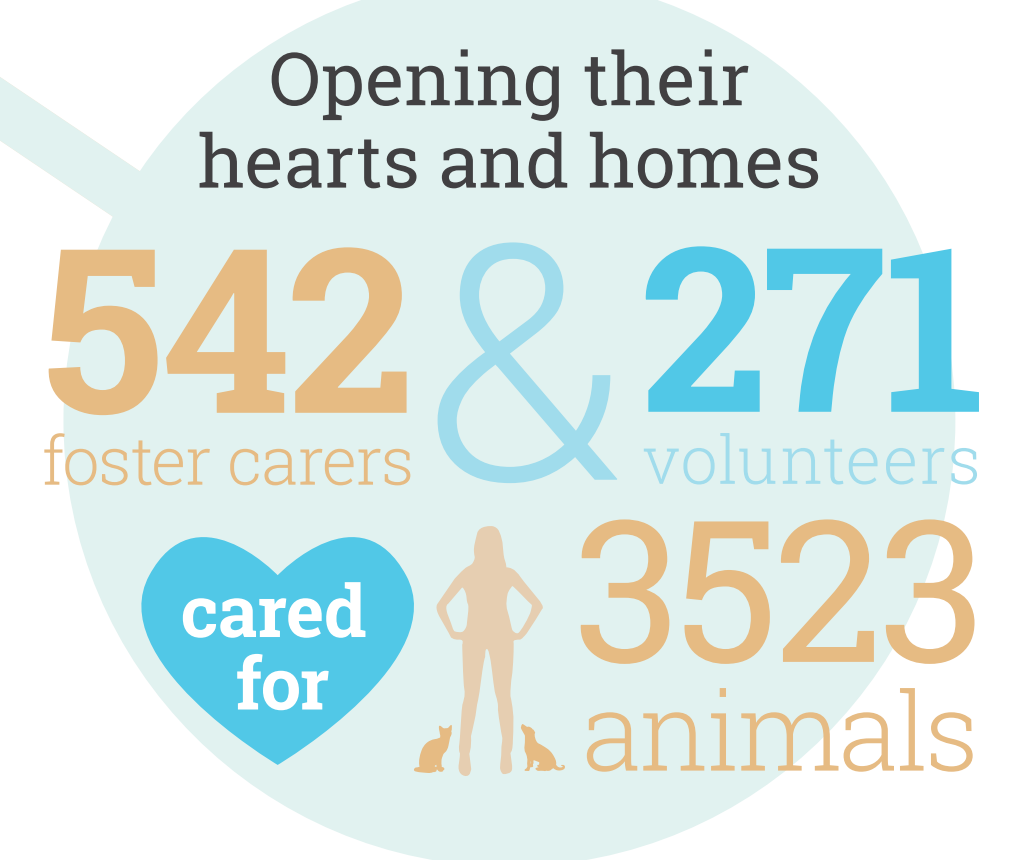
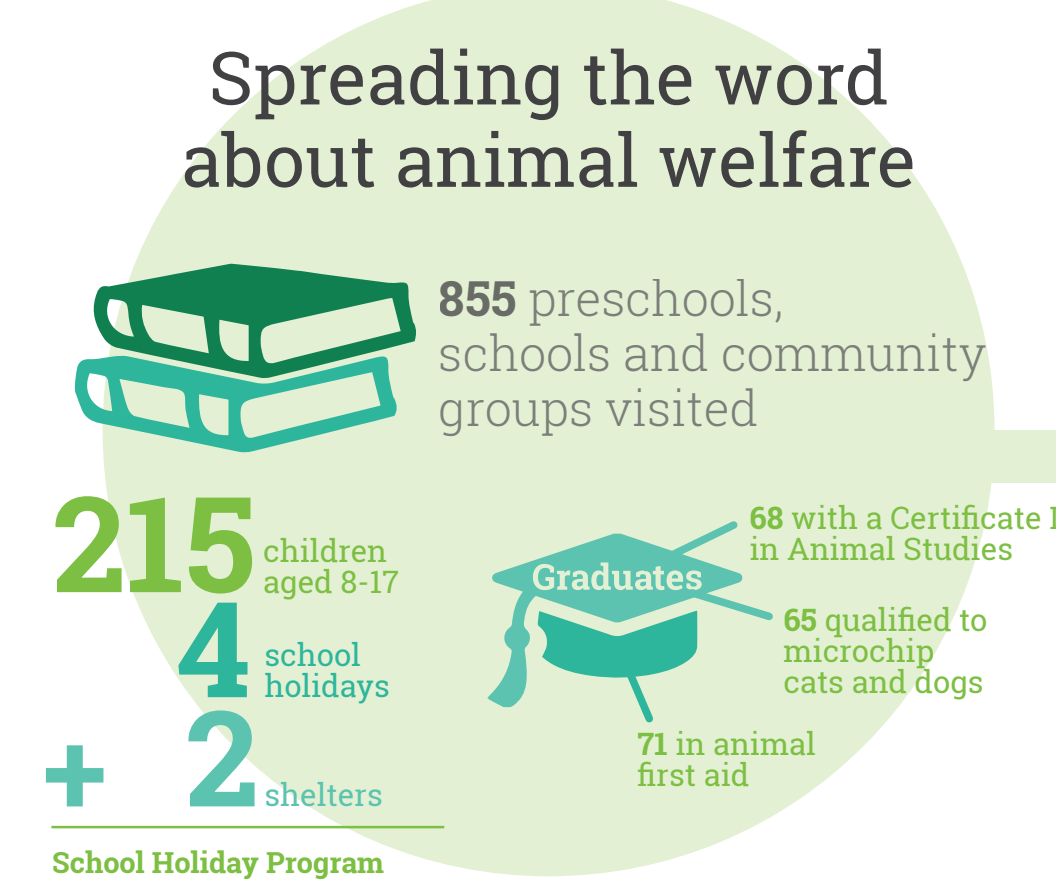


RSPCA NSW rescues, reunites, rehabilitates and rehomes



Helping people help animals



Unfortunately, many animals come to us too unwell to rehome. However, this year we reduced the number of animals we had to euthanase to 10,966 – more than 2000 fewer than last year.

RSPCA NSW Annual Report 2013/2014

Letter from the President

On July 16th 2013, RSPCA NSW turned 140 years old. This was a bittersweet milestone. As an organisation, we would like nothing more than to cease to exist because animal cruelty and neglect was a thing of the past. But – I am sorry to say – we are still here and our services are still very much in demand.

This financial year marks the end of my first strategic plan as President. For the past five years, this organisation has focused on preventing cruelty before it happens rather than reacting to it once it's occurred. We have turned our attention to education and community outreach projects that focus on human and pet well-being. Through our education programs we visited 855 schools and community groups and we partnered with nearly 80 rescue and welfare groups to help people help animals.

I am most proud of the combined efforts of our staff, volunteers and supporters who contributed to a year that saw an increase in awareness that led to more animals securing second chances at forever homes. On behalf of the animals, thank you for your financial and personal support this year.

Peter Wright
President, RSPCA NSW

Letter from the Chief Executive Officer

This year has been challenging for the RSPCA. Despite the success of our last five-year plan that refocused our efforts on helping people keep their pets happy and safe in their homes, we still cared for over 30,000 animals.

This placed enormous pressure on our organisation to raise funds to keep up with the demand for our services. Shelter and vet staff were also stretched to capacity with many of our facilities showing their age. Added to this is the ongoing rebuild of our Sydney Shelter. Although a necessary expenditure to ensure we can offer animals in desperate need a safe haven, it is nonetheless a costly exercise that has depleted our reserves.

Despite these challenges, our members should be proud of the results showcased in this report. Community-focused projects have seen the RSPCA expand its reach to where it's most needed and thanks to the Petbarn partnership, we've also increased rehoming with 1,370 additional animals finding homes.

The rebuild of the Sydney Shelter continues to be a funding priority but I can honestly say that with your help, I can see the light at the end of the tunnel. The reward will be better outcomes for animals in need across the state. That's something to be proud of.

Steve Coleman
Chief Executive Officer, RSPCA NSW

Bequests

- A** Marie Olive Abel
Mary Rosalind Adams
Esko Darrell Ahlquist
Valerie Anderson
Doreen May Margaret Arthur
- B** Iris Ethel Maud Ballard
Miva May Barker
Thalia Eunice Lorna Barratt
Mavis Jean Barrett
Iris Beddoe
Niobe Rideout Belletty
Evelyn Blackman
Dorothy Irene Blackwell
Jack Taylor Blunt
Gladys Sylvia Boardman
Johanna Maria Adriana Bogaard
Anna Borojevic
James Charles Botham
June Margaret Bradford
Manfred Brandt
Ian Francis Bruce
Joan Buchanan
Margaret Burch
Shirley Margaret Burrow
- C** Ian John James Campbell
Irene Margaret Candlish
Eric John Carr
William Keith Clark
Sue Conrad
Gloria Joy Cooper
- D** Alice Mary Dale
Briseis Ira Davies
Clifford Dedman
Margaret Ruth Dillon
- E** Essem Earp
Patricia Ellen Enderby
Katharina Esterbauer
Gayle Nenia Evans
- F** Barbara Anne Faulkner
Alice Jessie Fawsitt
Elsie Penelope Ferguson
Patricia Ethel Fletcher
Alan Edward Forbes
Jack Cowley Frankham
- G** Beryl Lyla Garthorn
Dinah Josephine Geoghegan
Rita Margaret Gerstl
- Desmond Francis Gledhill
Arthur Leonard Goodcare
Dorothy Grace Greening
Diane Louise Greenstein
Helmut Herman Greiner
Ailsa Guthrie
- H** Pamela Anne Manning Hair
James Manning Hair
Ronny Hemelraad
Maxine Narelle Hosking
- I** Beryl Olive Innes
- J** Eva Jessop
Helen Dawn Johnson
Carmen Johnston
Jessie Jean Johnston
Margaret Jude
- K** Joan Shirley Kelloway
Norma Joyce Kimmins
Richard Ralston King
- L** Gabrielle Anne Lawler
Gweneth Lilian Lawson
Irene Alice Lenton
- M** John Mansfield
Frauke Marcus
Barbara Elaine Marshall
Sylvia Annalise Maruca
Jeanette Sinclair McIntyre
Frances May Mcleod
Sharon Meissner
Norma Edith Merrett
Fivos Metaxas
Alice Catherine Montgomery
Joan Monica Morgan
Iris Pamela Morgan
Hazel Morrall
Douglas William John Morton
Johanna Hendriksje Murray
- N** Audrie Nagler
Cynthia
Margaret Nancarrow
John Russell Neave
Charles Nightingale
- O** Ruth Osbourne Oag
Margot Olchowy
Betty Stewart Osborne
Fay Monica Otruba
- P** Jacob Philips
Margaret Powling
Joan Beverley Pratt
Alice Dora Purcell
- R** Judith Lillian Rance
Valerie Esther Reynolds
Ngari Winifred Richards
Caterina Romani
Iris Beatrice Rowe
- S** Betty Jean Saddington
Allen Sampson
Marjorie Salomea Schaaf
Alexis Nicholas Schelokoff
Paul Sheedy
Lyla Shennan
Leonard Sills
Beverley Florence Snow
Roy Stuart South
Charles Christopher Spicer
Robyn Denise Stalder
Alison Joan Stallwood
Lorraine Mascot Stewart
Sybil Olive Stuckey
- T** Dolly Viona Thom
William George Tiley
- V** Julie-Anne Vens
Yvonne Joan Viner
- W** Winifred Warren
Elsie Bertha Wearden
Kym Adrian Williams
Michael Thornton Williams
Clive Alfred Wilson

Testamentary Trusts

- Clive Arnott Trust
Bill & Joy Barrie Trust
Oscar William Eschenhagen
Edwards Trust
William Moore Trust
Eric Norman Sweet Trust
Eleanor Smith Trust
Betty Wade Trust
Hilda Witton Trust

Corporate supporters

Allianz Australia	Doggone Gorgeous	One Steel
AGL	Hill's Pet Nutrition	Orica
AMP	Hindmarsh	Petbarn
ANZ	IAG	Peter Alexander
ATO	Integral Energy	Saatchi & Saatchi
Australia Post	Jetpets Animal Transport	Starcom Media
Bendigo and Adelaide Bank	Karma Currency	Suncorp
Bluescope	King & Wood Mallesons	Telstra
Caltex Australia	Lend Lease Australia	The Holland Insurance Company
Coles	Masters	Twining's
Colette Accessories Pty Ltd	Moda Unica	Veolia Transport
Coprice	Noble Toyota	Volkswagen Australia
DIMA	NRMA Motoring & Services	

Grants

- Bulldogs Leagues Club** for our Pets of Older Persons (aged care) program
- Cecilia Kilkeary Foundation** for our Pets of Older Persons program
- City of Sydney Local Community Grants** for our Pets of Older Persons program
- City of Sydney Local Community Grants** for our Living Ruff program
- Equity Trustees Foundation** for our Pets of Older Persons program
- The Hazel and Arthur Bruce Bequest** for an Inspectorate cattle trailer

Deloitte.

Deloitte Touche Tohmatsu
ABN 74 490 121 060

Eclipse Tower
Level 19
60 Station Street
Parramatta NSW 2150
PO Box 38
Parramatta NSW 2124 Australia

DX: 28485
Tel: +61 (0) 2 9840 7000
Fax: 02 9840 7001
www.deloitte.com.au

Report of the Independent Auditor on the Summary Financial Statements to the Directors of The Royal Society for the Prevention of Cruelty to Animals – New South Wales

The accompanying summary financial statements, which comprises the summary statement of financial position as at 30 June 2014, the summary statement of profit or loss and other comprehensive income, the summary statement of changes in equity and the summary statement of cash flows for the year then ended, are derived from the audited general purpose financial report of The Royal Society for the Prevention of Cruelty to Animals – New South Wales ("RSPCA NSW") for the year ended 30 June 2014. We expressed an unmodified audit opinion on that financial report in our report dated 9 October 2014. The financial report and the summary financial statements do not reflect the effects of events that occurred subsequent to the date of our report on that financial report.

The summary financial statements do not contain all the disclosures required by the Australian Accounting Standards. Reading the summary financial statements, therefore, is not a substitute for reading the audited financial report of RSPCA NSW.

Directors' Responsibility for the Summary Financial Statements
The Directors are responsible for the preparation of the summary financial statements in accordance with the requirements of the *Australian Charities and Not-for-profits Commission Act 2012*.

Auditor's Responsibility
Our responsibility is to express an opinion on the summary financial statements based on our procedures, which were conducted in accordance with Auditing Standard ASA B10 Engagements to Report on Summary Financial Statements.

Opinion
In our opinion, the summary financial statements derived from the audited financial report of RSPCA NSW for the year ended 30 June 2014 are consistent, in all material respects, with that audited financial report, in accordance with the *Australian Charities and Not-for-profits Commission Act 2012*.

Deloitte Touche Tohmatsu

DELOITTE TOUCHE TOHMATSU

Nathan Balban
Partner
Chartered Accountants
Parramatta, 9 October 2014

Liability limited by a scheme approved under Professional Standards Legislation.
Member of Deloitte Touche Tohmatsu Limited.

Summary financial statements for the financial year ended 30 June 2014

Statement of profit or loss and other comprehensive income for the financial year ended 30 June 2014

	2014 \$	2013 \$
Revenue	31,966,076	28,407,669
Operating Expenses	(48,102,893)	(44,092,691)
(Deficit) before legacies and grants	(16,136,817)	(15,685,022)
Legacies	16,607,998	10,268,615
Government grants	806,062	4,453,471
Surplus/(deficit) for the year	1,277,243	(962,936)
Other comprehensive income		
Items that may be reclassified subsequently to profit or loss:		
Net fair value gain on available-for-sale financial assets during the year	4,152,217	6,314,309
Total comprehensive income for the year	5,429,460	5,351,373

Statement of financial position as at 30 June 2014

	2014 \$	2013 \$
Current Assets		
Cash and cash equivalents	9,668,455	6,166,395
Trade and other receivables	2,489,535	1,674,060
Inventories	836,221	912,855
Other Assets	203,000	299,211
	13,197,211	9,052,521
Assets classified as held for sale	3,499,031	2,920,729
Total Current Assets	16,696,242	11,973,250
Non-Current Assets		
Financial assets	41,437,406	35,675,592
Property, plant and equipment	43,702,852	41,730,547
Investment properties	2,166,304	6,192,734
Total Non-Current Assets	87,306,562	83,598,873
Total Assets	104,002,804	95,572,123
Current Liabilities		
Trade and other payables	5,279,547	2,996,661
Provisions	4,024,312	3,249,208
Total Current Liabilities	9,303,859	6,245,869
Non-Current Liabilities		
Provisions	282,477	339,246
Total Non-Current Liabilities	282,477	339,246
Total Liabilities	9,586,336	6,585,115
Net Assets	94,416,468	88,987,008
Members' Equity and Specific Funds		
Specific funds	347,748	346,748
Accumulated funds	83,782,732	82,506,489
Reserves	10,285,988	6,133,771
Total Equity and Funds	94,416,468	88,987,008

Statement of changes in equity for the financial year ended 30 June 2014

	Specific Funds \$	Revaluation Reserve \$	Accumulated funds \$	Total \$
Balance at 1 July 2012	345,345	(180,538)	83,470,828	83,635,635
(Deficit) for the year	-	-	(962,936)	(962,936)
Change in fair value of available for sale assets	-	6,314,309	-	6,314,309
Total comprehensive income for the year	-	6,314,309	(962,936)	5,351,373
Transfer to specific funds	1,403	-	(1,403)	-
Balance at 30 June 2013	346,748	6,133,771	82,506,489	88,987,008
Balance at 1 July 2013	346,748	6,133,771	82,506,489	88,987,008
(Deficit) for the year	-	-	1,277,243	1,277,243
Change in fair value of available for sale assets	-	4,152,217	-	4,152,217
Total comprehensive income for the year	-	4,152,217	1,277,243	5,429,460
Transfer to specific funds	1,000	-	(1,000)	-
Balance at 30 June 2014	347,748	10,285,988	83,782,732	94,416,468

Statement of cash flows for the financial year ended 30 June 2014

	2014 \$	2013 \$
Cash flow from operating activities		
Receipts from members and customers	22,856,089	21,312,527
Payments to suppliers and employees	(43,775,585)	(41,070,030)
Donations received	3,929,401	3,705,036
Legacies received	15,713,895	8,159,316
Government subsidy	806,062	4,453,471
Subscriptions	44,701	46,088
Net cash (outflow)/inflow from operating activities	(425,437)	(3,393,592)
Cash flow from investing activities		
Rent received	667,108	748,508
Interest received	482,002	10,375
Dividends received	2,112,726	1,903,873
Proceeds for the sale of property, plant and equipment	10,734,490	5,980,679
Proceeds for the sale of investment securities	-	434,435
Payment for investment securities	(1,878,039)	(1,454,057)
Payment for property, plant and equipment	(8,190,790)	(10,020,035)
Net cash (outflow)/inflow from investing activities	3,927,497	(2,363,222)
Net (decrease)/increase in cash and cash equivalents	3,502,060	(5,756,814)
Cash and cash equivalents at the beginning of the financial year	6,166,395	11,923,209
Cash and cash equivalents at the end of the financial year	9,668,455	6,166,395

The full version of RSPCA NSW's financial statements are available to view on our website:
rspcansw.org.au/about/financials