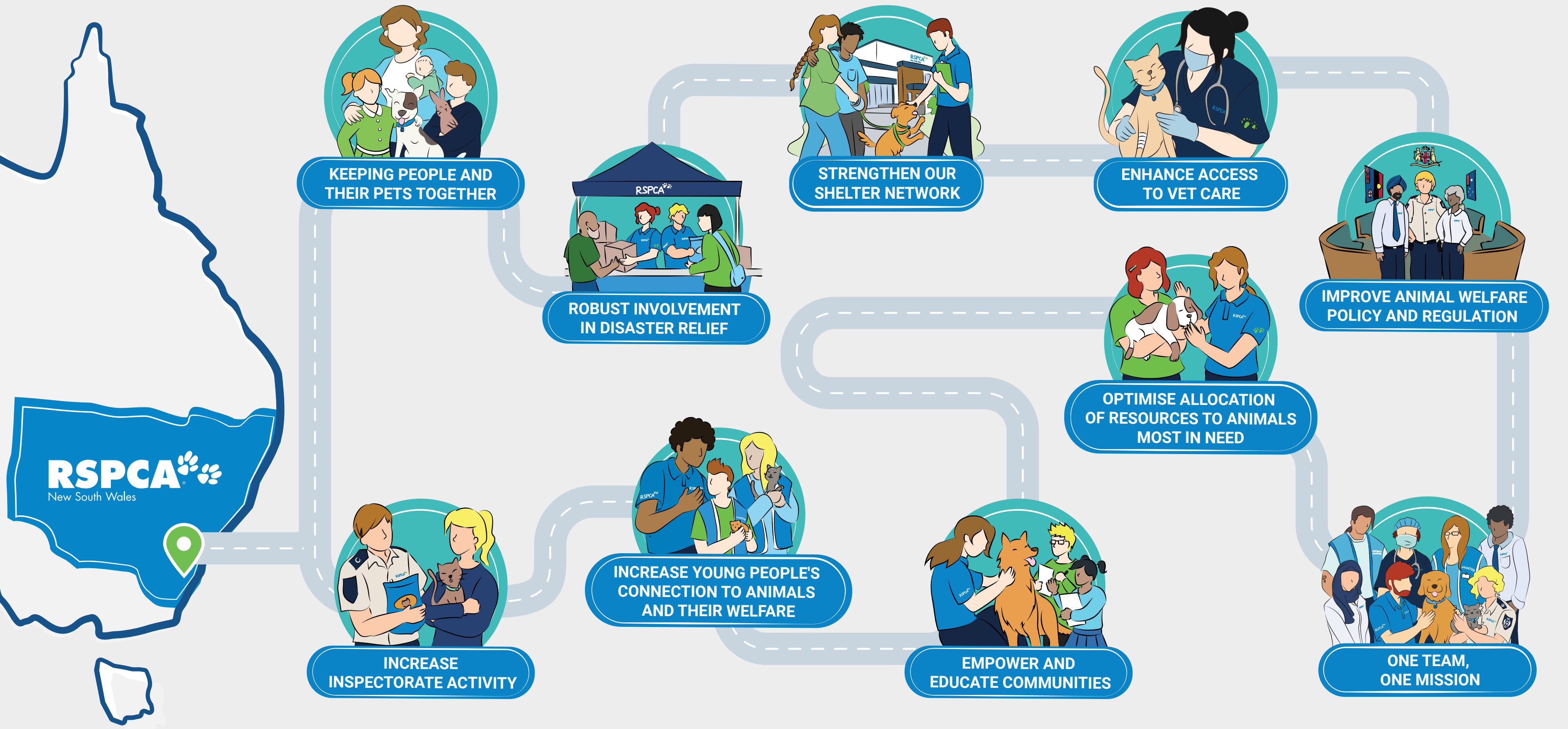


PAVING A STRONGER FUTURE FOR PEOPLE AND ANIMALS

RSPCA NSW Strategic Plan | FY 24-26





INCREASE INSPECTORATE ACTIVITY

We will **enhance animal welfare by increasing the number of inspectors in the field**, improving response times to cruelty complaints and increase the support provided to people and their pets.



ENHANCE ACCESS TO VET CARE

We will **provide alternative ways through which the community can access pet health services**, ensuring increased accessibility and affordability for pet owners.



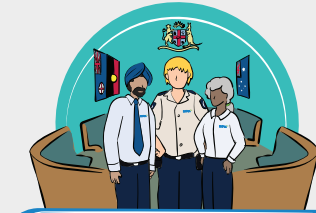
ROBUST INVOLVEMENT IN DISASTER RELIEF

We will **efficiently respond during times of disaster** and increase the support we provide to both people and animals.



KEEPING PEOPLE AND THEIR PETS TOGETHER

We will build a **comprehensive social safety net of services** to support and enable people and their pets to stay together during times of hardship and crisis.



IMPROVE ANIMAL WELFARE POLICY AND REGULATION

We will **improve animal welfare regulation and policies**, working towards securing impactful and positive regulatory changes that benefit the animals of NSW.



STRENGTHEN OUR SHELTER NETWORK

We will **operate a modern and innovative shelter network** that will provide positive and enriched animal welfare outcomes.



INCREASE YOUNG PEOPLE'S CONNECTION TO ANIMALS AND THEIR WELFARE

We will **actively engage young people** through digital platforms and in-person interactions to create the next generation of animal advocates.



EMPOWER AND EDUCATE COMMUNITIES

We will expand our reach by providing **opportunities for people to access our training and education resources**; as well as continuing to build the capacity of our member and volunteer groups to deliver valuable programs.



OPTIMISE ALLOCATION OF RESOURCES TO ANIMALS MOST IN NEED

We will **apply demand-led resource allocation** to direct our efforts to those people and animals most in need, resulting in more effective and targeted service delivery that better serves communities.



ONE TEAM, ONE MISSION

We will focus on fostering a **"One Team, One Mission"** culture, implementing communication initiatives to further engage staff and volunteers.



FOCUS ON DIVERSITY AND INCLUSION

We will continue to actively consider and **promote diversity and inclusion** across our organisation.



FOSTER RELATIONSHIPS WITH AGENCIES AND PARTNERS

We will actively develop and foster **strong relationships with agencies and partners**, working collaboratively to ensure the well-being of animals and people in need.



ADVANCE SHELTER MEDICINE

We will have a **strong focus on the physical and behavioural wellness of all animals in our care** and continually invest in the care of our shelter animal population.



TECHNOLOGICAL INNOVATION

We will utilise and **invest in technology innovation** to enhance our service delivery and efficiency.



INSTIL A CULTURE OF CONTINUOUS LEARNING

We will **provide a wide variety of quality training programs**, enabling better delivery of services for animals and communities.



REDUCE OVER-POPULATION OF CATS

We will **reduce cat over-population** and encourage positive behavioural change towards our feline companions in homes and the community.



MODERNISE THE VOLUNTEERING FRAMEWORK

We will **further enhance our volunteering programs** by creating more opportunities for volunteer-driven initiatives to expand our positive animal impacts across the state.



CONTRIBUTE TO A GREENER ENVIRONMENT

By implementing initiatives to minimise our impact on the environment, we will actively **contribute to a greener environment** and reduce our carbon footprint.



ENSURE FINANCIAL SUSTAINABILITY

We will continue to manage our assets and resources in a **financially and ethically responsible way** to support the animals and people of NSW.